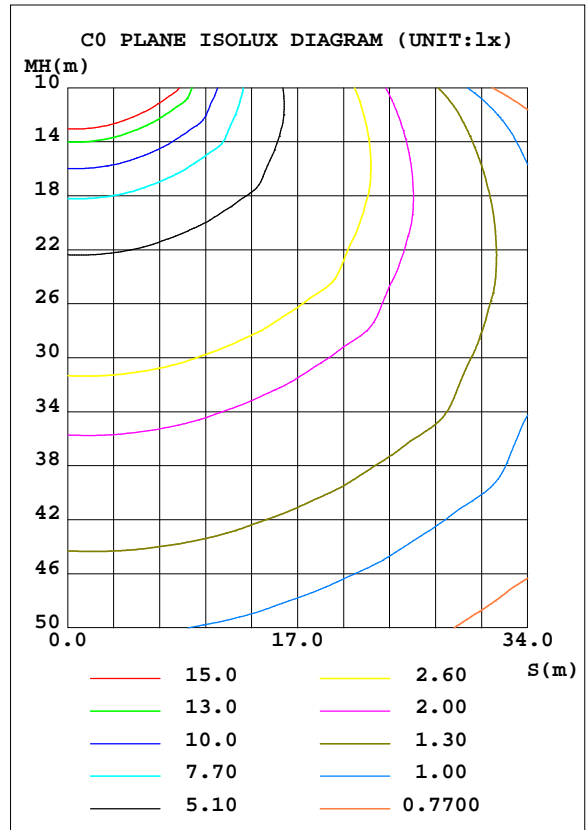
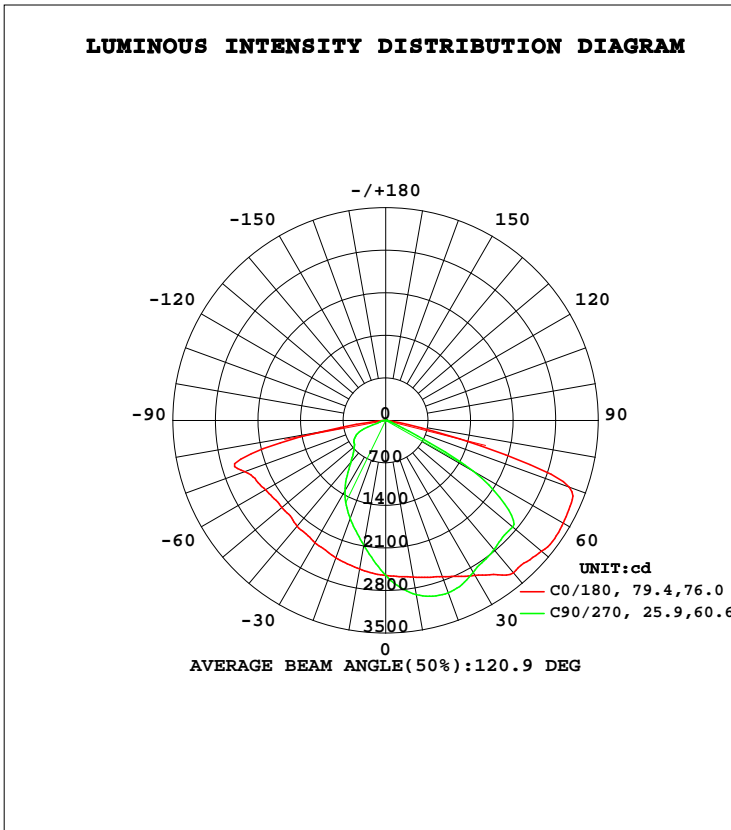


LUMINAIRE PHOTOMETRIC TEST REPORT

Test:U:120.1V I:0.6711A P:80.35W PF:0.9967 Lamp Flux:10232.3x1 lm		
NAME: SNC-NWP-80W-4000K	TYPE:	WEIGHT:
SPEC.:	DIM.:	SERIAL No.:
MFR.: SNC OPTO ELECTRONIC CO.,LTD	SUR.:	PROTECTION ANGLE:

DATA OF LAMP		PHOTOMETRIC DATA Eff: 127.34 lm/W			
MODEL	80W	I _{max} (cd)	4483	S/MH(C0/180)	1.38
NOMINAL POWER(W)	80	LOR(%)	100.0	S/MH(C90/270)	0.84
RATED VOLTAGE(V)	120	TOTAL FLUX(lm)	10232	η UP, DN(C0-180)	0.1, 67.5
NOMINAL FLUX(lm)	10232.3	CIE CLASS	DIRECT	η UP, DN(C180-360)	0.1, 32.3
LAMPS INSIDE	1	η up(%)	0.2	CIBSE SHR NOM	1.50
TEST VOLTAGE(V)	120.0	η down(%)	99.8	CIBSE SHR MAX	1.55



C Range: 0 - 360DEG
 C Interval: 22.5DEG
 Test Speed: HIGH
 Temperature:25.2DEG
 Operators:Leo
 Test Date:2016-03-07

γ Range: 0 - 180DEG
 γ Interval: 1.0DEG
 Test System:EVERFINE GO-R5000_V2 SYSTEM V2.0.284
 Humidity:60.0%
 Test Distance:26.000m [K=1.3570]
 Remarks:

ZONAL FLUX DIAGRAM

ZONAL FLUX DIAGRAM:

γ	C0	C45	C90	C135	C180	C225	C270	C315	γ	Φ zone	Φ total	%lum,lamp
10	2618	2893	2909	2784	2481	2169	2085	2256	0- 10	242.3	242.3	2.37,2.37
20	2736	3150	3017	2891	2403	1823	1715	2000	10- 20	707.5	949.8	9.28,9.28
30	2946	3347	2886	2878	2327	1553	1346	1799	20- 30	1124	2074	20.3,20.3
40	3274	3557	2775	2793	2270	1269	891.3	1567	30- 40	1469	3543	34.6,34.6
50	3348	3658	2730	2729	2231	919.7	676.2	1168	40- 50	1732	5275	51.6,51.6
60	3376	3796	1656	2858	2285	698.7	590.2	851.3	50- 60	1914	7189	70.3,70.3
70	3216	3285	132.9	2314	2470	552.3	324.7	660.1	60- 70	1771	8960	87.6,87.6
80	241.5	647.2	38.36	205.4	1063	88.19	67.78	78.56	70- 80	1144	10104	98.7,98.7
90	3.421	1.803	0	0.5845	2.475	1.060	0	0.9017	80- 90	109.9	10213	99.8,99.8
100	3.946	0.4231	0	0.0530	3.903	4.065	0	2.865	90-100	1.714	10215	99.8,99.8
110	5.739	0.4749	0	0.5819	6.321	5.594	0.8517	3.709	100-110	2.591	10218	99.9,99.9
120	6.001	1.054	0	1.377	6.367	6.701	3.126	3.973	110-120	3.292	10221	99.9,99.9
130	5.317	1.319	0.5813	4.220	5.840	5.382	4.699	3.814	120-130	3.290	10224	99.9,99.9
140	4.580	1.372	1.319	2.067	4.949	4.116	4.594	3.391	130-140	2.747	10227	99.9,99.9
150	4.001	2.211	2.058	2.480	4.523	4.538	4.646	4.556	140-150	2.171	10229	100,100
160	3.053	3.060	2.535	3.285	3.685	3.798	3.749	3.761	150-160	1.607	10231	100,100
170	3.790	4.168	3.587	4.132	4.212	4.539	4.963	4.872	160-170	1.005	10232	100,100
180	3.738	4.749	4.699	4.662	3.422	4.168	4.170	4.450	170-180	0.4206	10232	100,100
DEG	LUMINOUS INTENSITY:cd									UNIT:lm		

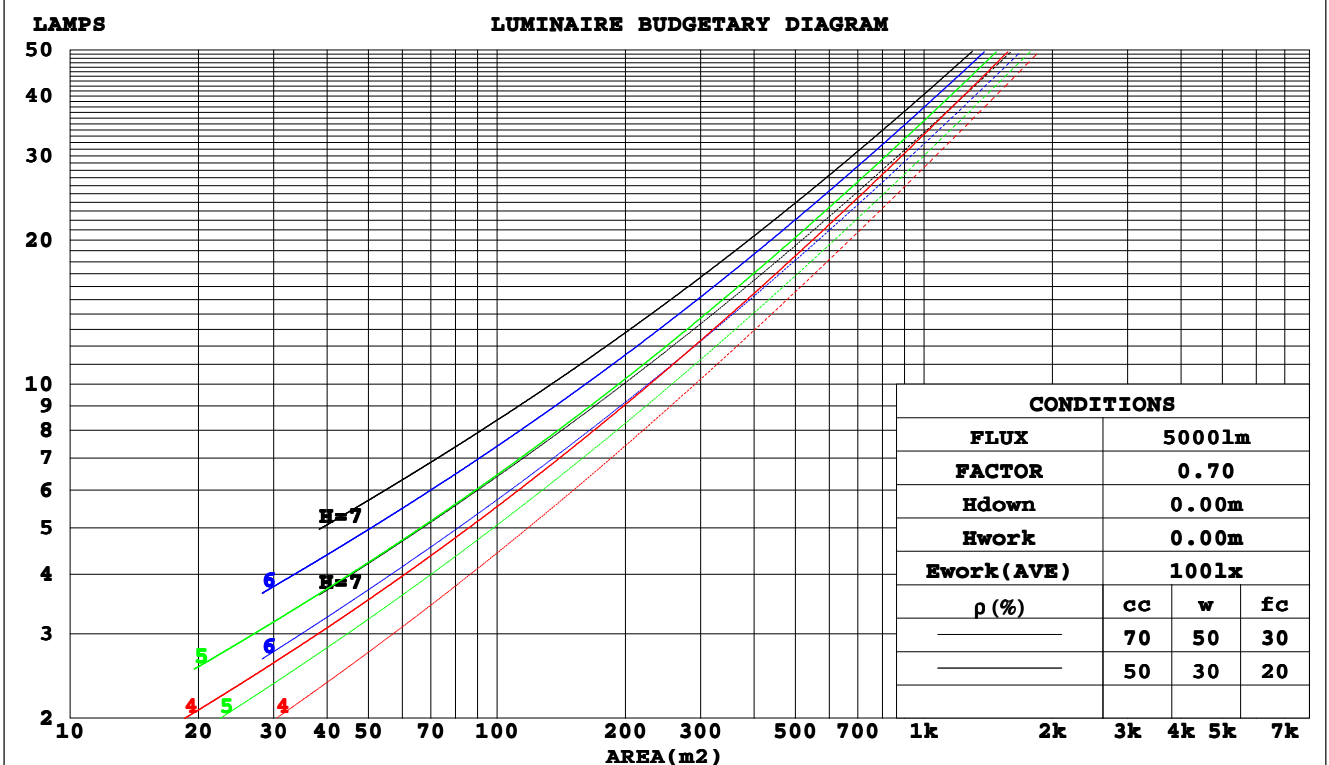
C Range: 0 - 360DEG
 C Interval: 22.5DEG
 Test Speed: HIGH
 Temperature:25.2DEG
 Operators:Leo
 Test Date:2016-03-07

γ Range: 0 - 180DEG
 γ Interval: 1.0DEG
 Test System:EVERFINE GO-R5000_V2 SYSTEM V2.0.284
 Humidity:60.0%
 Test Distance:26.000m [K=1.3570]
 Remarks:

CU AND LUMINAIRE BUDGETARY ESTIMATE DIAGRAM

Test:U:120.1V I:0.6711A P:80.35W PF:0.9967 Lamp Flux:10232.3x1 lm		
NAME: SNC-NWP-80W-4000K	TYPE:	WEIGHT:
SPEC.:	DIM.:	SERIAL No.:
MFR.: SNC OPTO ELECTRONIC CO.,LTD	SUR.:	PROTECTION ANGLE:

ρcc	80%			70%			50%			30%			10%			0
ρw	50%	30%	10%	50%	30%	10%	50%	30%	10%	50%	30%	10%	50%	30%	10%	0
ρfc	20%			20%			20%			20%			20%			0
RCR	RCR:Room Cavity Ratio															
	Coefficients of Utilization(CU)															
0.0	1.19	1.19	1.19	1.16	1.16	1.16	1.11	1.11	1.11	1.06	1.06	1.06	1.02	1.02	1.02	.00
1.0	1.02	.97	.93	.00	.96	.92	.96	.92	.89	.92	.89	.86	.88	.86	.83	.81
2.0	.87	.80	.73	.85	.78	.72	.81	.76	.70	.78	.73	.69	.75	.71	.67	.65
3.0	.75	.66	.59	.73	.65	.58	.70	.63	.57	.67	.61	.56	.65	.59	.55	.53
4.0	.65	.56	.48	.64	.55	.48	.61	.54	.47	.59	.52	.47	.57	.51	.46	.44
5.0	.58	.48	.41	.57	.47	.40	.54	.46	.40	.52	.45	.39	.50	.44	.39	.37
6.0	.51	.42	.35	.50	.41	.35	.49	.40	.34	.47	.39	.34	.45	.39	.34	.31
7.0	.46	.37	.30	.45	.36	.30	.44	.36	.30	.42	.35	.30	.41	.34	.29	.27
8.0	.42	.33	.27	.41	.33	.27	.40	.32	.26	.38	.31	.26	.37	.31	.26	.24
9.0	.38	.30	.24	.38	.29	.24	.36	.29	.23	.35	.28	.23	.34	.28	.23	.21
10.0	.35	.27	.21	.35	.27	.21	.34	.26	.21	.33	.26	.21	.32	.25	.21	.19



C Range: 0 - 360DEG
 C Interval: 22.5DEG
 Test Speed: HIGH
 Temperature: 25.2DEG
 Operators: Leo
 Test Date: 2016-03-07

γ Range: 0 - 180DEG
 γ Interval: 1.0DEG
 Test System: EVERFINE GO-R5000_V2 SYSTEM V2.0.284
 Humidity: 60.0%
 Test Distance: 26.000m [K=1.3570]
 Remarks:

WEC AND CCEC

Test:U:120.1V I:0.6711A P:80.35W PF:0.9967 Lamp Flux:10232.3x1 lm		
NAME: SNC-NWP-80W-4000K	TYPE:	WEIGHT:
SPEC.:	DIM.:	SERIAL No.:
MFR.: SNC OPTO ELECTRONIC CO.,LTD	SUR.:	PROTECTION ANGLE:

ρ_{cc}	80%			70%			50%			30%			10%			0
ρ_w	50%	30%	10%	50%	30%	10%	50%	30%	10%	50%	30%	10%	50%	30%	10%	0
ρ_{fc}	20%			20%			20%			20%			20%			0
RCR	RCR:Room Cavity Ratio						Wall Exitance Coefficients(WEC)									
0.0																
1.0	.341	.194	.061	.333	.190	.060	.320	.183	.059	.307	.177	.057	.296	.172	.055	
2.0	.323	.177	.054	.317	.174	.054	.305	.169	.053	.293	.165	.052	.283	.160	.050	
3.0	.297	.158	.047	.292	.156	.047	.281	.152	.046	.271	.148	.046	.262	.145	.045	
4.0	.272	.141	.042	.267	.140	.041	.257	.137	.041	.249	.133	.040	.240	.131	.040	
5.0	.249	.127	.037	.245	.126	.037	.236	.123	.036	.228	.121	.036	.221	.118	.035	
6.0	.230	.115	.033	.226	.114	.033	.218	.112	.033	.211	.110	.032	.204	.108	.032	
7.0	.212	.105	.030	.209	.104	.030	.202	.102	.029	.196	.100	.029	.190	.098	.029	
8.0	.197	.096	.027	.194	.095	.027	.188	.094	.027	.182	.092	.027	.177	.091	.026	
9.0	.184	.089	.025	.181	.088	.025	.175	.087	.025	.170	.085	.024	.165	.084	.024	
10.0	.172	.082	.023	.169	.082	.023	.165	.081	.023	.160	.079	.023	.156	.078	.022	

ρ_{cc}	80%			70%			50%			30%			10%			0
ρ_w	50%	30%	10%	50%	30%	10%	50%	30%	10%	50%	30%	10%	50%	30%	10%	0
ρ_{fc}	20%			20%			20%			20%			20%			0
RCR	RCR:Room Cavity Ratio						Ceiling Cavity Exitance Coefficients(CCEC)									
0.0																
1.0	.192	.192	.192	.164	.164	.164	.112	.112	.112	.064	.064	.064	.021	.021	.021	
2.0	.178	.133	.096	.152	.115	.083	.104	.079	.058	.060	.046	.034	.019	.015	.011	
3.0	.171	.116	.072	.147	.100	.062	.101	.069	.044	.058	.041	.026	.019	.013	.008	
4.0	.164	.103	.056	.141	.089	.049	.097	.062	.034	.056	.036	.020	.018	.012	.007	
5.0	.156	.093	.046	.134	.080	.040	.093	.056	.028	.054	.033	.017	.017	.011	.005	
6.0	.149	.085	.038	.128	.073	.033	.088	.051	.024	.051	.030	.014	.017	.010	.005	
7.0	.142	.078	.033	.122	.067	.029	.084	.047	.020	.049	.028	.012	.016	.009	.004	
8.0	.135	.072	.029	.116	.062	.025	.080	.044	.018	.047	.026	.011	.015	.008	.004	
9.0	.129	.067	.026	.111	.058	.022	.077	.041	.016	.045	.024	.009	.014	.008	.003	
10.0	.123	.063	.023	.106	.055	.020	.073	.038	.014	.043	.023	.008	.014	.007	.003	

C Range: 0 - 360DEG
 C Interval: 22.5DEG
 Test Speed: HIGH
 Temperature:25.2DEG
 Operators:Leo
 Test Date:2016-03-07

γ Range: 0 - 180DEG
 γ Interval: 1.0DEG
 Test System:EVERFINE GO-R5000_V2 SYSTEM V2.0.284
 Humidity:60.0%
 Test Distance:26.000m [K=1.3570]
 Remarks:

UGR(Unified Glare Rating) Table

Test:U:120.1V I:0.6711A P:80.35W PF:0.9967 Lamp Flux:10232.3x1 lm		
NAME: SNC-NWP-80W-4000K	TYPE:	WEIGHT:
SPEC.:	DIM.:	SERIAL No.:
MFR.: SNC OPTO ELECTRONIC CO.,LTD	SUR.:	PROTECTION ANGLE:

ceiling/cavity	0.7	0.7	0.5	0.5	0.3	0.7	0.7	0.5	0.5	0.3
walls	0.5	0.3	0.5	0.3	0.3	0.5	0.3	0.5	0.3	0.3
working plane	0.2	0.2	0.2	0.2	0.2	0.2	0.2	0.2	0.2	0.2
Room dimensions	Viewed crosswise					Viewed endwise				
x = 2H y = 2H	30.5	32.1	30.8	32.4	32.6	27.6	29.2	27.9	29.4	29.7
3H	33.7	35.3	34.0	35.5	35.8	27.6	29.2	27.9	29.4	29.7
4H	34.7	36.1	35.0	36.4	36.7	27.5	29.0	27.8	29.2	29.5
6H	34.7	36.1	35.0	36.4	36.7	27.4	28.8	27.8	29.1	29.4
8H	34.6	36.0	35.0	36.3	36.6	27.4	28.7	27.7	29.0	29.3
12H	34.6	35.9	35.0	36.2	36.5	27.3	28.6	27.7	28.9	29.2
4H 2H	31.4	32.9	31.7	33.1	33.4	29.5	30.9	29.8	31.2	31.5
3H	35.1	36.3	35.4	36.7	37.0	29.9	31.2	30.3	31.5	31.9
4H	36.2	37.4	36.6	37.7	38.0	29.9	31.1	30.3	31.4	31.7
6H	36.2	37.3	36.6	37.6	38.0	29.8	30.9	30.2	31.2	31.6
8H	36.2	37.2	36.6	37.6	37.9	29.8	30.7	30.2	31.1	31.5
12H	36.2	37.1	36.6	37.4	37.9	29.7	30.6	30.1	31.0	31.4
8H 4H	36.4	37.3	36.8	37.7	38.1	31.6	32.6	32.1	33.0	33.4
6H	36.5	37.3	36.9	37.7	38.1	31.6	32.4	32.0	32.8	33.3
8H	36.4	37.2	36.9	37.6	38.0	31.6	32.3	32.0	32.7	33.2
12H	36.4	37.0	36.9	37.5	38.0	31.5	32.2	32.0	32.6	33.1
12H 4H	36.3	37.2	36.8	37.6	38.0	31.6	32.5	32.1	32.9	33.3
6H	36.4	37.2	36.9	37.6	38.0	31.6	32.3	32.1	32.8	33.2
8H	36.4	37.0	36.9	37.5	38.0	31.6	32.2	32.1	32.7	33.1
Variations with the observer position at spacings:										
s = 1.0H	+ 0.1 / - 0.2					+ 0.1 / - 0.2				
1.5H	+ 0.4 / - 0.8					+ 0.7 / - 0.9				
2.0H	+ 1.1 / - 1.7					+ 0.9 / - 1.2				

CIE Pub.117 Corrected 10232 lm Total Lamp Luminous Flux.(8log(F/F0) = 8.1)

C Range: 0 - 360DEG
 C Interval: 22.5DEG
 Test Speed: HIGH
 Temperature:25.2DEG
 Operators:Leo
 Test Date:2016-03-07

γ Range: 0 - 180DEG
 γ Interval: 1.0DEG
 Test System:EVERFINE GO-R5000_V2 SYSTEM V2.0.284
 Humidity:60.0%
 Test Distance:26.000m [K=1.3570]
 Remarks:

UTILIZATION FACTORS TABLE

Test:U:120.1V I:0.6711A P:80.35W PF:0.9967 Lamp Flux:10232.3x1 lm		
NAME: SNC-NWP-80W-4000K	TYPE:	WEIGHT:
SPEC.:	DIM.:	SERIAL No.:
MFR.: SNC OPTO ELECTRONIC CO.,LTD	SUR.:	PROTECTION ANGLE:

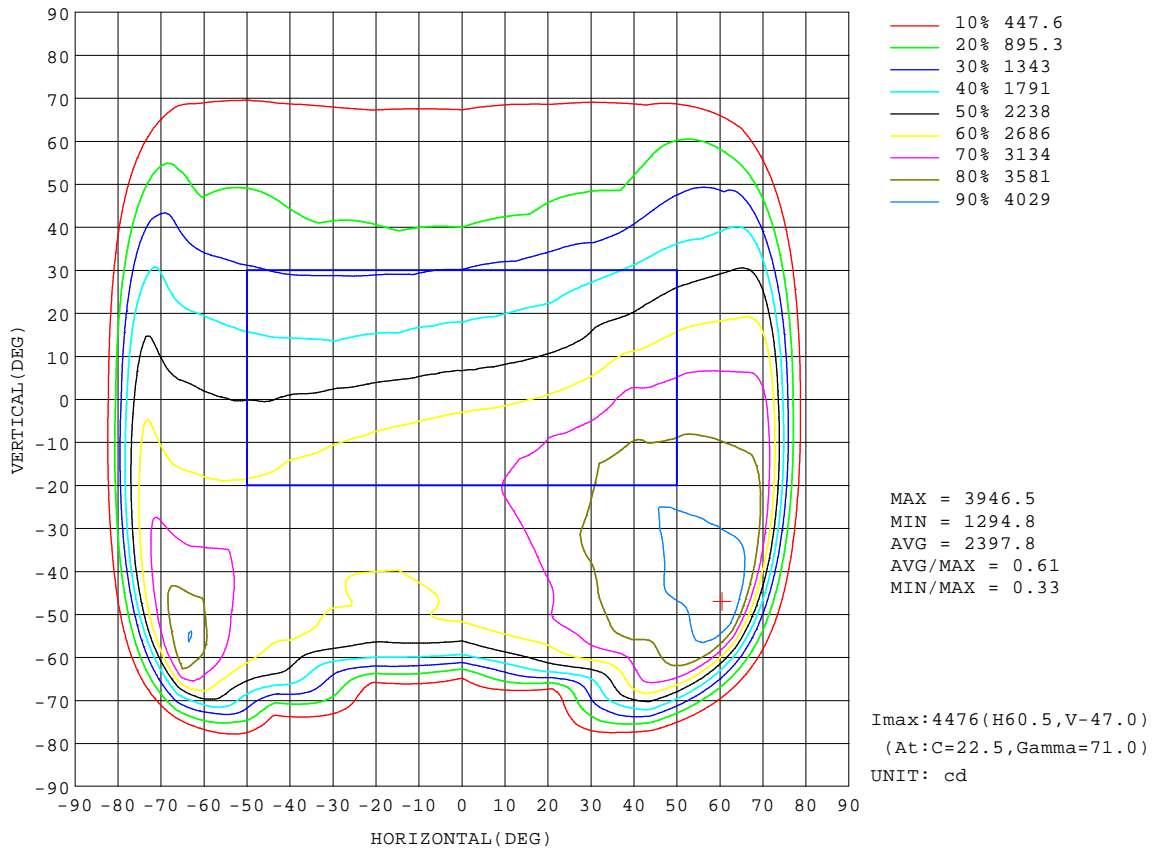
REFLECTANCE										
Ceiling	0.8	0.8	0.8	0.7	0.7	0.7	0.5	0.5	0.5	0
Walls	0.7	0.5	0.3	0.7	0.5	0.3	0.7	0.5	0.3	0
Working plane	0.2	0.2	0.2	0.2	0.2	0.2	0.2	0.2	0.2	0
ROOM INDEX	UTILIZATION FACTORS(PERCENT) $k(RI) \times RCR = 5$									
k = 0.60	52	39	32	51	39	32	50	39	32	25
0.80	62	49	41	61	49	41	59	48	40	33
1.00	71	58	50	69	57	50	67	59	49	41
1.25	78	66	58	76	65	58	74	64	57	49
1.50	84	72	64	82	71	64	78	69	63	54
2.00	91	82	74	89	80	73	86	78	72	63
2.50	96	87	80	94	86	79	90	83	78	69
3.00	100	92	86	98	90	85	93	87	83	74
4.00	105	98	93	102	96	92	98	93	89	80
5.00	107	102	98	105	100	96	100	96	93	83
ROOM INDEX	UF(total)									Direct
According to DIN EN 13032-2 2004			Suspended				SHRNOM = 1.25			

C Range: 0 - 360DEG
 C Interval: 22.5DEG
 Test Speed: HIGH
 Temperature:25.2DEG
 Operators:Leo
 Test Date:2016-03-07

γ Range: 0 - 180DEG
 γ Interval: 1.0DEG
 Test System:EVERFINE GO-R5000_V2 SYSTEM V2.0.284
 Humidity:60.0%
 Test Distance:26.000m [K=1.3570]
 Remarks:

ISOCANDELA DIAGRAM

Test:U:120.1V I:0.6711A P:80.35W PF:0.9967 Lamp Flux:10232.3x1 lm		
NAME: SNC-NWP-80W-4000K	TYPE:	WEIGHT:
SPEC.:	DIM.:	SERIAL No.:
MFR.: SNC OPTO ELECTRONIC CO.,LTD	SUR.:	PROTECTION ANGLE:

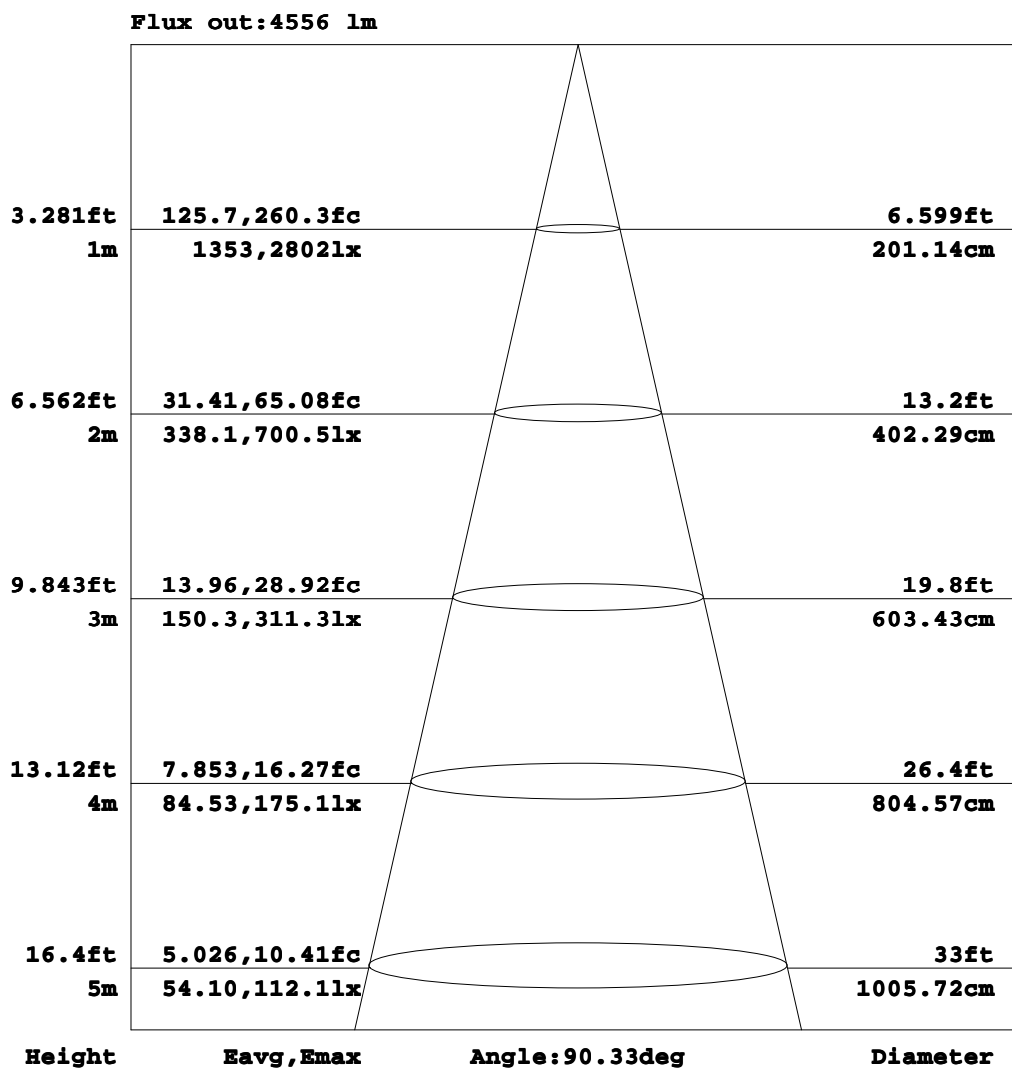


C Range: 0 - 360DEG
C Interval: 22.5DEG
Test Speed: HIGH
Temperature: 25.2DEG
Operators: Leo
Test Date: 2016-03-07

γ Range: 0 - 180DEG
γ Interval: 1.0DEG
Test System: EVERFINE GO-R5000_V2 SYSTEM V2.0.284
Humidity: 60.0%
Test Distance: 26.000m [K=1.3570]
Remarks:

AAI Figure

Test:U:120.1V I:0.6711A P:80.35W PF:0.9967 Lamp Flux:10232.3x1 lm		
NAME: SNC-NWP-80W-4000K	TYPE:	WEIGHT:
SPEC.:	DIM.:	SERIAL No.:
MFR.: SNC OPTO ELECTRONIC CO.,LTD	SUR.:	PROTECTION ANGLE:



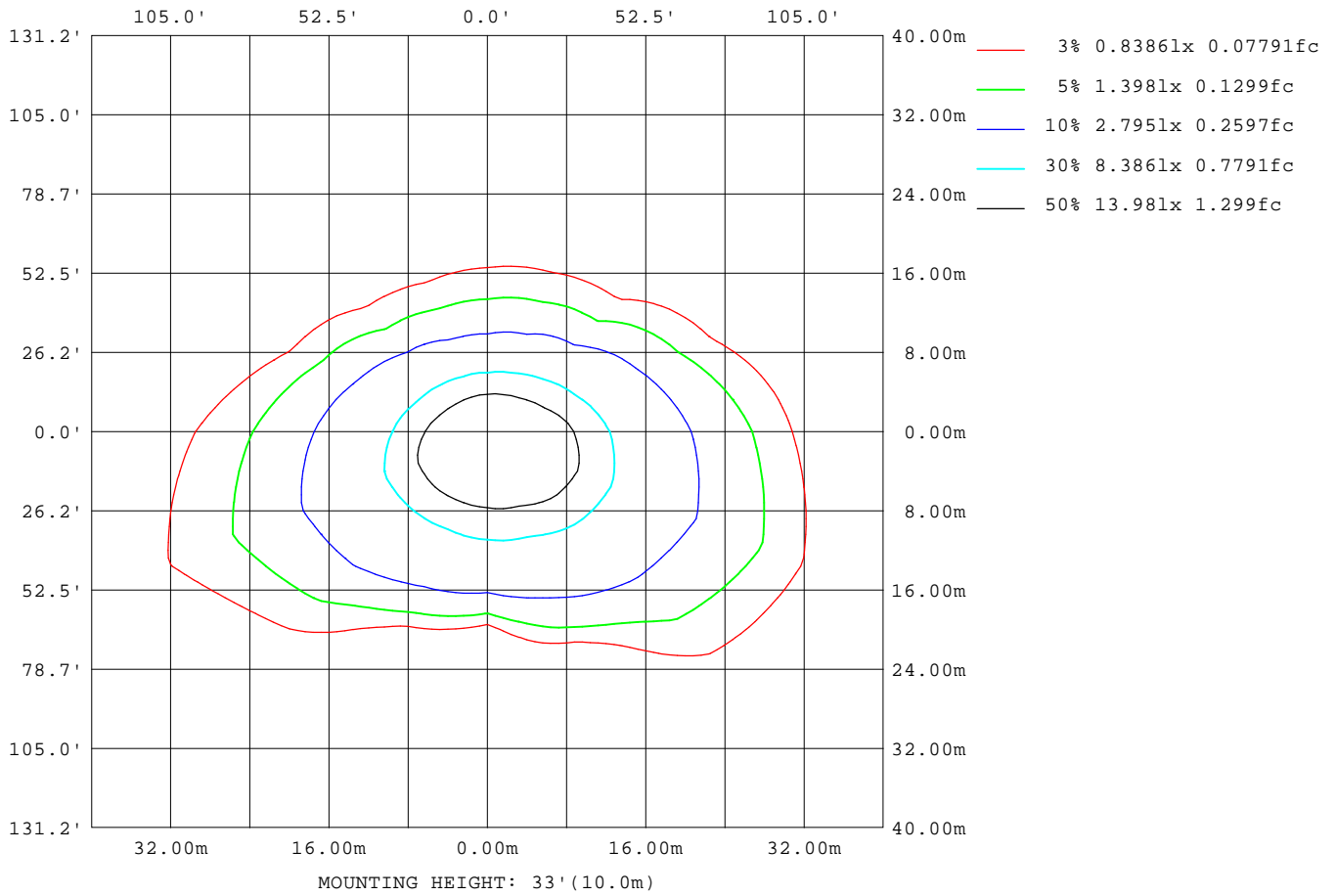
Note:The Curves indicate the illuminated area and the average illumination when the luminaire is at different distance.

C Range: 0 - 360DEG
 C Interval: 22.5DEG
 Test Speed: HIGH
 Temperature:25.2DEG
 Operators:Leo
 Test Date:2016-03-07

γ Range: 0 - 180DEG
 γ Interval: 1.0DEG
 Test System:EVERFINE GO-R5000_V2 SYSTEM V2.0.284
 Humidity:60.0%
 Test Distance:26.000m [K=1.3570]
 Remarks:

ISOLUX DIAGRAM

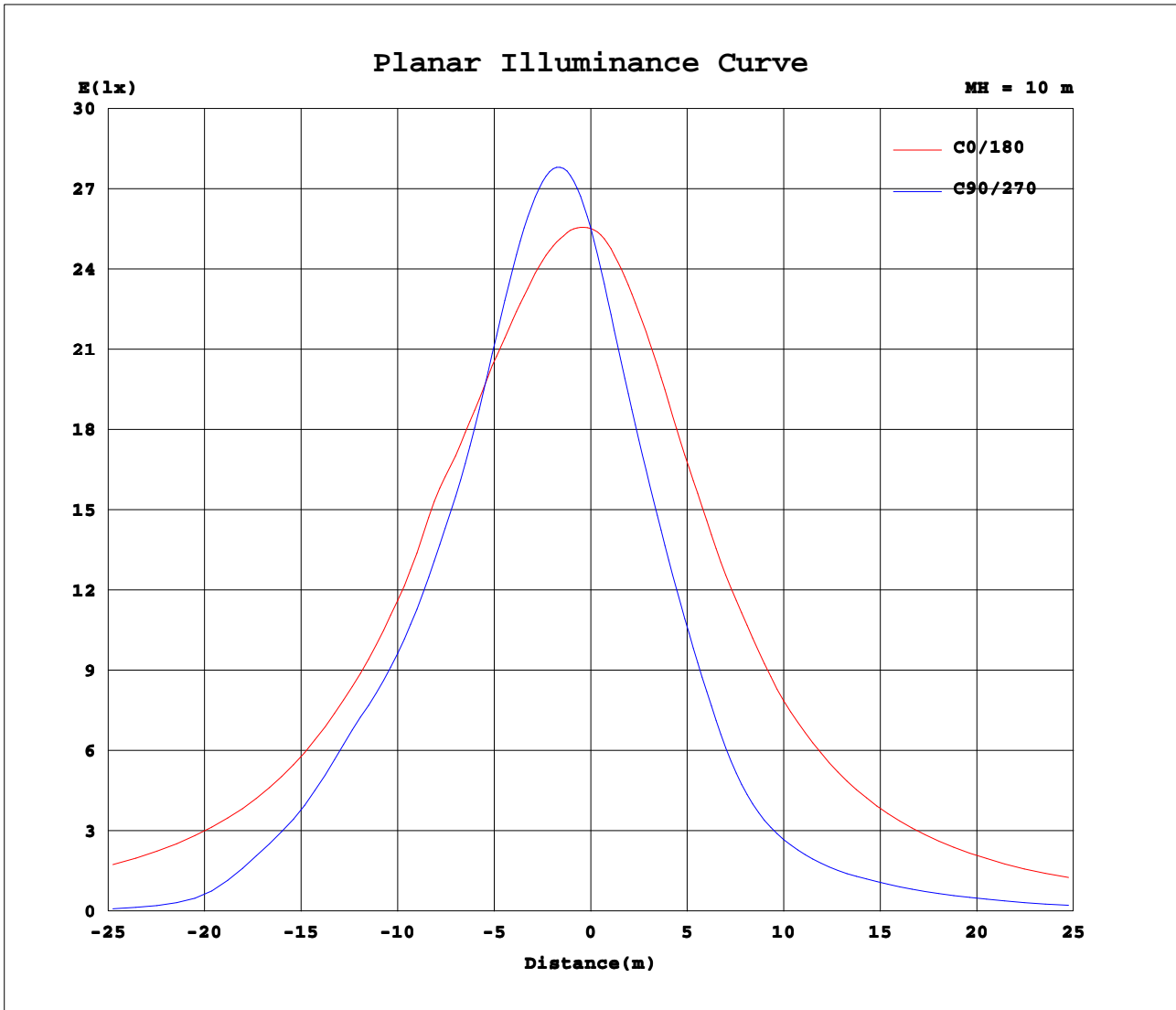
Test:U:120.1V I:0.6711A P:80.35W PF:0.9967 Lamp Flux:10232.3x1 lm		
NAME: SNC-NWP-80W-4000K	TYPE:	WEIGHT:
SPEC.:	DIM.:	SERIAL No.:
MFR.: SNC OPTO ELECTRONIC CO.,LTD	SUR.:	PROTECTION ANGLE:



C Range: 0 - 360DEG
C Interval: 22.5DEG
Test Speed: HIGH
Temperature: 25.2DEG
Operators: Leo
Test Date: 2016-03-07

γ Range: 0 - 180DEG
γ Interval: 1.0DEG
Test System: EVERFINE GO-R5000_V2 SYSTEM V2.0.284
Humidity: 60.0%
Test Distance: 26.000m [K=1.3570]
Remarks:

Planar Illuminance Curve



C Range: 0 - 360DEG
 C Interval: 22.5DEG
 Test Speed: HIGH
 Temperature: 25.2DEG
 Operators: Leo
 Test Date: 2016-03-07

γ Range: 0 - 180DEG
 γ Interval: 1.0DEG
 Test System: EVERFINE GO-R5000_V2 SYSTEM V2.0.284
 Humidity: 60.0%
 Test Distance: 26.000m [K=1.3570]
 Remarks:

LUMINOUS DISTRIBUTION INTENSITY DATA

Test:U:120.1V I:0.6711A P:80.35W PF:0.9967 Lamp Flux:10232.3x1 lm		
NAME: SNC-NWP-80W-4000K	TYPE:	WEIGHT:
SPEC.:	DIM.:	SERIAL No.:
MFR.: SNC OPTO ELECTRONIC CO.,LTD	SUR.:	PROTECTION ANGLE:

Table--1

UNIT: cd

C (DEG) \ γ (DEG)	0	23	45	68	90	113	135	158	180	203	225	248	270	293	315	338			
0	2551	2551	2551	2551	2551	2551	2551	2551	2551	2551	2551	2551	2551	2551	2551	2551			
5	2578	2666	2731	2765	2757	2742	2684	2606	2523	2435	2362	2326	2312	2339	2403	2487			
10	2618	2787	2893	2932	2909	2877	2784	2653	2481	2304	2169	2106	2085	2139	2256	2426			
15	2672	2919	3029	3044	2993	2950	2842	2685	2443	2177	1985	1904	1890	1964	2122	2370			
20	2736	3064	3150	3109	3017	2961	2891	2722	2403	2060	1823	1731	1715	1811	2000	2327			
25	2831	3221	3256	3119	2977	2929	2903	2747	2353	1940	1686	1561	1541	1659	1900	2295			
30	2946	3395	3347	3088	2886	2842	2878	2778	2327	1834	1553	1377	1346	1498	1799	2286			
35	3095	3584	3441	3044	2819	2770	2844	2793	2284	1745	1417	1171	1109	1307	1707	2325			
40	3274	3822	3557	2996	2775	2719	2793	2828	2270	1652	1269	945	891	1077	1567	2282			
45	3283	3926	3639	2943	2722	2640	2755	2851	2223	1566	1101	784	757	903	1393	2233			
50	3348	4014	3658	2946	2730	2623	2729	2885	2231	1485	920	688	676	797	1168	2188			
55	3393	4111	3716	2973	2387	2565	2749	2971	2245	1402	783	619	639	723	974	2100			
60	3376	4209	3796	2588	1656	2062	2858	3097	2285	1289	699	568	590	677	851	1933			
65	3347	4311	3524	1833	423	1027	2653	3297	2347	1106	629	519	512	622	754	1708			
70	3216	4473	3285	254	133	195	2314	3593	2470	906	552	414	325	451	660	1422			
75	1634	3168	2502	91.0	76.0	80.9	1168	4070	2470	738	436	197	102	173	405	945			
80	242	368	647	44.3	38.4	41.3	205	2983	1063	535	88.2	60.4	67.8	61.7	78.6	320			
85	27.3	32.2	37.9	7.17	4.44	7.38	39.3	113	97.0	46.8	34.5	29.7	30.4	31.7	35.9	31.8			
90	3.42	2.79	1.80	0.00	0.00	0.00	0.58	3.76	2.48	2.48	1.06	0.00	0.00	0.00	0.90	4.02			
95	3.42	1.63	0.69	0.00	0.00	0.00	0.11	2.33	2.85	3.85	2.49	0.00	0.00	0.00	1.64	5.18			
100	3.95	1.37	0.42	0.00	0.00	0.00	0.05	2.17	3.90	5.54	4.06	0.27	0.00	0.00	2.87	5.34			
105	5.00	1.94	0.42	0.00	0.00	0.00	0.37	2.33	5.32	6.85	4.86	1.60	0.00	0.70	3.66	6.14			
110	5.74	2.42	0.47	0.00	0.00	0.00	0.58	3.33	6.32	7.65	5.59	2.86	0.85	1.81	3.71	7.19			
115	5.90	2.79	0.53	0.00	0.00	0.00	1.01	3.91	6.37	8.27	6.18	3.12	2.17	2.18	4.08	6.76			
120	6.00	2.90	1.05	0.16	0.00	0.32	1.38	4.12	6.37	8.22	6.70	4.14	3.13	3.19	3.97	5.33			
125	5.42	3.00	1.27	0.42	0.42	0.80	1.59	4.60	6.05	7.48	5.59	5.03	4.22	3.93	3.87	4.70			
130	5.32	3.00	1.32	0.58	0.58	1.01	4.22	4.60	5.84	6.37	5.38	5.45	4.70	4.67	3.81	4.07			
135	4.58	2.79	1.32	1.05	0.90	1.27	2.22	4.07	5.47	5.53	5.16	5.29	4.70	4.51	3.44	3.96			
140	4.58	2.79	1.37	1.22	1.32	1.65	2.07	4.02	4.95	5.53	4.12	4.87	4.59	4.46	3.39	3.96			
145	4.32	2.63	1.42	1.43	1.32	2.01	1.96	3.54	4.84	5.00	4.22	4.82	4.59	4.62	4.08	3.91			
150	4.00	2.53	2.21	1.80	2.06	2.17	2.48	3.54	4.52	4.85	4.54	4.71	4.65	4.67	4.56	3.70			
155	3.63	2.53	2.95	2.06	2.37	2.49	3.18	3.60	3.63	4.58	4.01	4.23	4.17	4.20	4.13	3.59			
160	3.05	2.74	3.06	2.43	2.54	2.71	3.29	3.54	3.69	3.79	3.80	3.97	3.75	3.93	3.76	3.65			
165	3.58	3.06	3.38	2.70	2.96	2.98	3.28	3.22	3.69	3.85	3.48	3.97	3.54	3.88	3.87	3.65			
170	3.79	3.37	4.17	3.76	3.59	3.88	4.13	3.38	4.21	4.27	4.54	5.40	4.96	5.21	4.87	4.97			
175	3.74	3.95	4.80	4.13	4.59	4.46	4.61	3.86	4.05	4.05	4.59	4.92	4.70	5.52	4.66	4.96			
180	3.74	4.16	4.75	4.18	4.70	4.36	4.66	3.54	3.42	3.74	4.17	4.76	4.17	4.73	4.45	4.65			

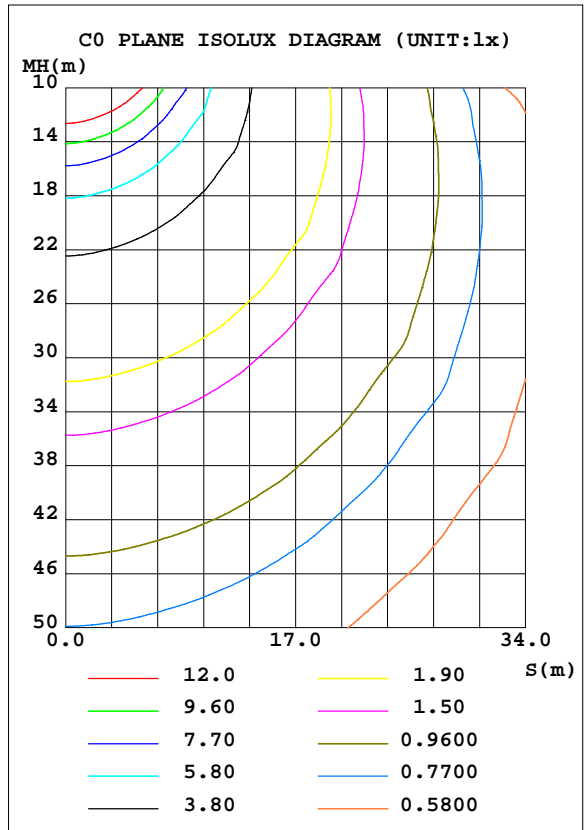
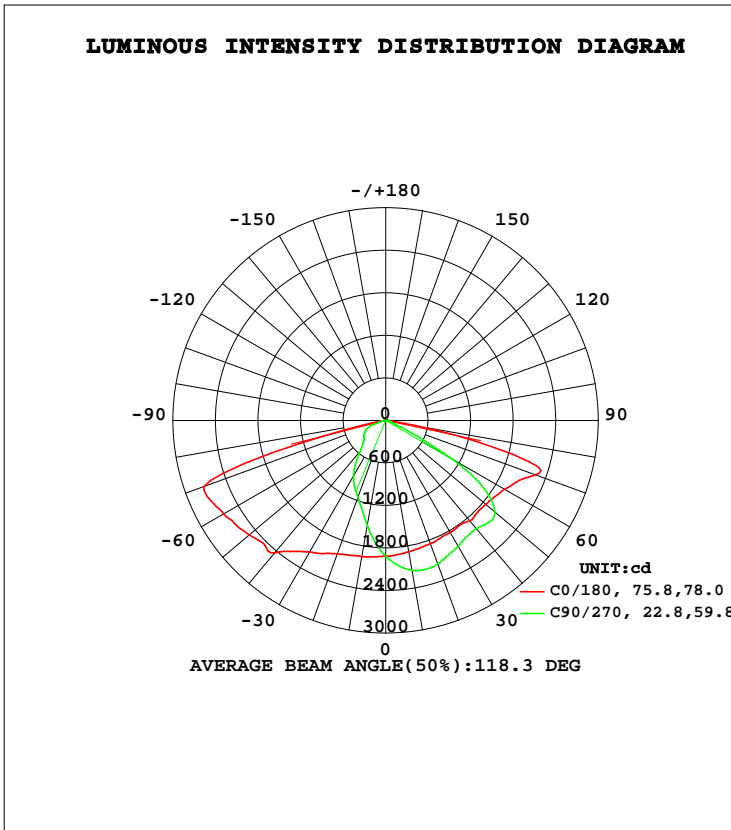
C Range: 0 - 360DEG
 C Interval: 22.5DEG
 Test Speed: HIGH
 Temperature: 25.2DEG
 Operators: Leo
 Test Date: 2016-03-07

γ Range: 0 - 180DEG
 γ Interval: 1.0DEG
 Test System: EVERFINE GO-R5000_V2 SYSTEM V2.0.284
 Humidity: 60.0%
 Test Distance: 26.000m [K=1.3570]
 Remarks:

LUMINAIRE PHOTOMETRIC TEST REPORT

Test:U:120.0V I:0.5123A P:61.08W PF:0.9937 Lamp Flux:7351.19x1 lm		
NAME: SNC-NWP-60W-4000K	TYPE:	WEIGHT:
SPEC.:	DIM.:	SERIAL No.:
MFR.: SNC OPTO ELECTRONIC CO.,LTD	SUR.:	PROTECTION ANGLE:

DATA OF LAMP		PHOTOMETRIC DATA Eff: 120.36 lm/W			
MODEL	60W	I _{max} (cd)	3305	S/MH(C0/180)	1.88
NOMINAL POWER(W)	60	LOR(%)	100.0	S/MH(C90/270)	0.73
RATED VOLTAGE(V)	120	TOTAL FLUX(lm)	7351.2	η UP, DN(C0-180)	0.0,66.8
NOMINAL FLUX(lm)	7351.19	CIE CLASS	DIRECT	η UP, DN(C180-360)	0.1,33.1
LAMPS INSIDE	1	η up(%)	0.1	CIBSE SHR NOM	1.25
TEST VOLTAGE(V)	120.0	η down(%)	99.9	CIBSE SHR MAX	1.35



C Range: 0 - 360DEG
 C Interval: 22.5DEG
 Test Speed: HIGH
 Temperature:25.2DEG
 Operators:Leo
 Test Date:2016-03-07

γ Range: 0 - 180DEG
 γ Interval: 1.0DEG
 Test System:EVERFINE GO-R5000_V2 SYSTEM V2.0.284
 Humidity:60.0%
 Test Distance:26.000m [K=1.3570]
 Remarks:

ZONAL FLUX DIAGRAM

ZONAL FLUX DIAGRAM:

γ	C0	C45	C90	C135	C180	C225	C270	C315	γ	Φ zone	Φ total	%lum,lamp
10	1881	2067	2144	2122	1948	1653	1503	1601	0- 10	180.3	180.3	2.45,2.45
20	1848	2126	2152	2249	2005	1372	1153	1266	10- 20	514.0	694.3	9.45,9.45
30	1825	2109	2049	2311	2144	1166	911.8	1048	20- 30	800.0	1494	20.3,20.3
40	1847	2079	1995	2434	2439	1014	561.2	859.0	30- 40	1044	2538	34.5,34.5
50	1844	2058	2010	2443	2513	769.0	397.7	600.2	40- 50	1248	3786	51.5,51.5
60	1941	2231	1053	2655	2641	500.2	343.6	419.9	50- 60	1388	5174	70.4,70.4
70	2250	1864	112.4	2262	2727	354.1	223.3	326.5	60- 70	1309	6483	88.2,88.2
80	437.8	127.8	29.71	136.8	135.5	41.34	49.75	42.52	70- 80	815.1	7298	99.3,99.3
90	1.095	0.0629	0	0.0034	1.468	0	0	0.0564	80- 90	42.29	7341	99.9,99.9
100	2.919	0	0	0	2.617	1.481	0	1.902	90-100	0.8408	7341	99.9,99.9
110	4.646	0	0	0	3.396	2.424	0.2154	2.846	100-110	1.485	7343	99.9,99.9
120	5.432	0.4215	0	0	2.874	3.004	1.876	3.161	110-120	1.965	7345	99.9,99.9
130	5.175	0.4215	0	0	2.455	2.476	3.045	2.951	120-130	1.918	7347	99.9,99.9
140	3.919	0.5277	0.0526	0	2.142	1.949	2.937	2.477	130-140	1.487	7348	100,100
150	3.032	1.210	0.5881	0.6827	2.089	2.213	2.832	3.003	140-150	1.159	7350	100,100
160	1.933	1.846	1.229	1.265	2.037	1.949	2.244	2.266	150-160	0.8650	7350	100,100
170	2.141	2.789	2.080	2.055	2.403	2.688	3.098	3.056	160-170	0.5706	7351	100,100
180	2.144	3.003	3.149	2.791	2.038	2.424	2.564	2.424	170-180	0.2491	7351	100,100
DEG	LUMINOUS INTENSITY:cd									UNIT:lm		

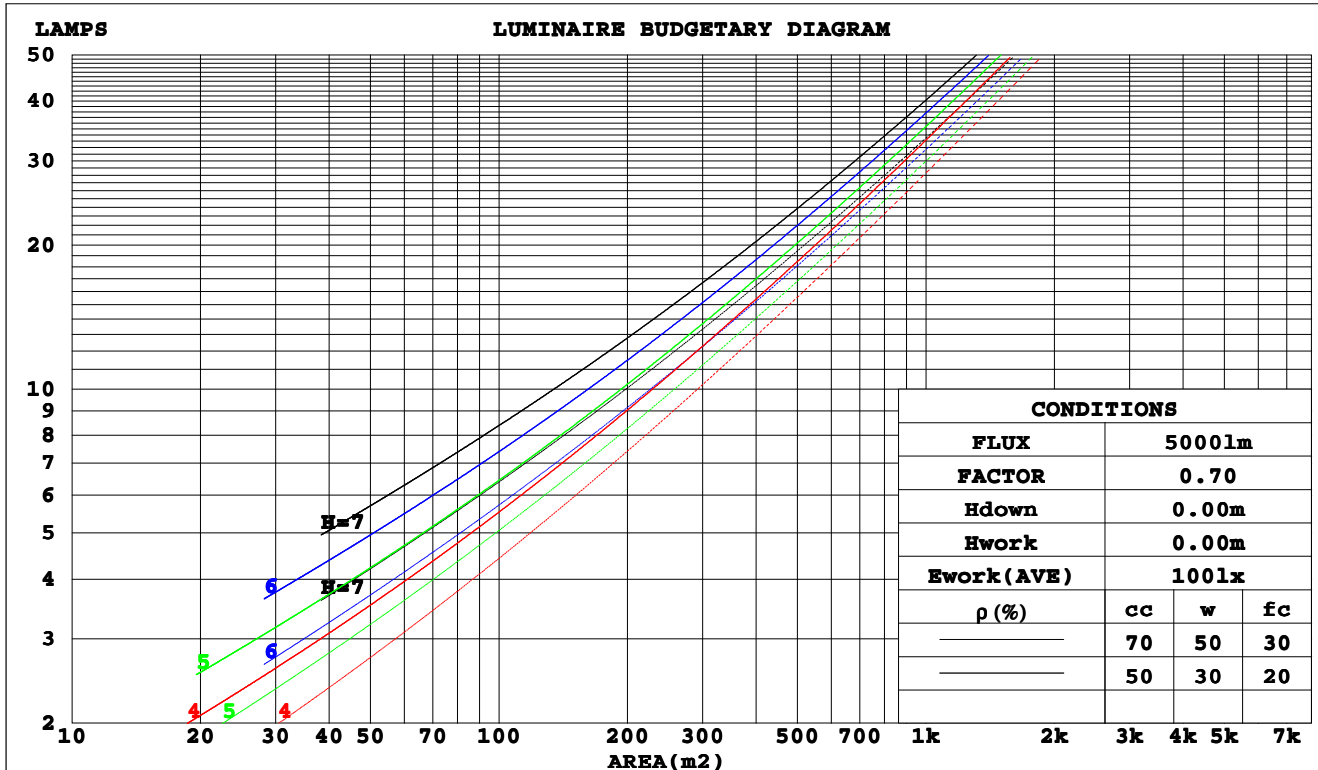
C Range: 0 - 360DEG
 C Interval: 22.5DEG
 Test Speed: HIGH
 Temperature:25.2DEG
 Operators:Leo
 Test Date:2016-03-07

γ Range: 0 - 180DEG
 γ Interval: 1.0DEG
 Test System:EVERFINE GO-R5000_V2 SYSTEM V2.0.284
 Humidity:60.0%
 Test Distance:26.000m [K=1.3570]
 Remarks:

CU AND LUMINAIRE BUDGETARY ESTIMATE DIAGRAM

Test:U:120.0V I:0.5123A P:61.08W PF:0.9937 Lamp Flux:7351.19x1 lm		
NAME: SNC-NWP-60W-4000K	TYPE:	WEIGHT:
SPEC.:	DIM.:	SERIAL No.:
MFR.: SNC OPTO ELECTRONIC CO.,LTD	SUR.:	PROTECTION ANGLE:

ρ_{cc}	80%			70%			50%			30%			10%			0
ρ_w	50%	30%	10%	50%	30%	10%	50%	30%	10%	50%	30%	10%	50%	30%	10%	0
ρ_{fc}	20%			20%			20%			20%			20%			0
RCR	RCR:Room Cavity Ratio						Coefficients of Utilization(CU)									
0.0	1.19	1.19	1.19	1.16	1.16	1.16	1.11	1.11	1.11	1.06	1.06	1.06	1.02	1.02	1.02	.00
1.0	1.02	.98	.94	1.00	.96	.92	.96	.92	.89	.92	.89	.86	.88	.86	.84	.82
2.0	.87	.80	.73	.85	.78	.72	.82	.76	.71	.78	.73	.69	.75	.71	.67	.65
3.0	.75	.66	.59	.74	.65	.58	.70	.63	.57	.68	.61	.56	.65	.60	.55	.53
4.0	.66	.56	.49	.64	.55	.48	.62	.54	.47	.59	.52	.47	.57	.51	.46	.44
5.0	.58	.48	.41	.57	.47	.41	.54	.46	.40	.52	.45	.40	.50	.44	.39	.37
6.0	.52	.42	.35	.51	.41	.35	.49	.40	.34	.47	.40	.34	.45	.39	.34	.31
7.0	.46	.37	.30	.45	.37	.30	.44	.36	.30	.42	.35	.30	.41	.34	.29	.27
8.0	.42	.33	.27	.41	.33	.27	.40	.32	.26	.39	.31	.26	.37	.31	.26	.24
9.0	.38	.30	.24	.38	.29	.24	.36	.29	.23	.35	.28	.23	.34	.28	.23	.21
10.0	.35	.27	.21	.35	.27	.21	.34	.26	.21	.33	.26	.21	.32	.25	.21	.19



C Range: 0 - 360DEG
C Interval: 22.5DEG
Test Speed: HIGH
Temperature: 25.2DEG
Operators: Leo
Test Date: 2016-03-07

γ Range: 0 - 180DEG
 γ Interval: 1.0DEG
Test System: EVERFINE GO-R5000_V2 SYSTEM V2.0.284
Humidity: 60.0%
Test Distance: 26.000m [K=1.3570]
Remarks:

WEC AND CCEC

Test:U:120.0V I:0.5123A P:61.08W PF:0.9937 Lamp Flux:7351.19x1 lm		
NAME: SNC-NWP-60W-4000K	TYPE:	WEIGHT:
SPEC.:	DIM.:	SERIAL No.:
MFR.: SNC OPTO ELECTRONIC CO.,LTD	SUR.:	PROTECTION ANGLE:

ρ_{cc}	80%			70%			50%			30%			10%			0
ρ_w	50%	30%	10%	50%	30%	10%	50%	30%	10%	50%	30%	10%	50%	30%	10%	0
ρ_{fc}	20%			20%			20%			20%			20%			0
RCR	RCR:Room Cavity Ratio						Wall Exitance Coefficients(WEC)									
0.0																
1.0	.336	.191	.061	.329	.188	.060	.315	.181	.058	.303	.175	.056	.292	.169	.054	
2.0	.321	.176	.054	.315	.173	.053	.303	.168	.052	.292	.164	.051	.281	.159	.050	
3.0	.296	.158	.047	.291	.156	.047	.280	.152	.046	.270	.148	.045	.261	.144	.045	
4.0	.272	.141	.042	.267	.140	.041	.257	.136	.041	.248	.133	.040	.240	.130	.040	
5.0	.249	.127	.037	.245	.126	.037	.236	.123	.036	.228	.120	.036	.221	.118	.035	
6.0	.229	.115	.033	.225	.114	.033	.218	.112	.032	.211	.110	.032	.204	.107	.032	
7.0	.212	.105	.030	.209	.104	.030	.202	.102	.029	.195	.100	.029	.190	.098	.029	
8.0	.197	.096	.027	.194	.095	.027	.188	.094	.027	.182	.092	.027	.177	.091	.026	
9.0	.184	.089	.025	.181	.088	.025	.175	.087	.025	.170	.085	.024	.165	.084	.024	
10.0	.172	.082	.023	.169	.082	.023	.164	.081	.023	.160	.079	.023	.155	.078	.022	

ρ_{cc}	80%			70%			50%			30%			10%			0
ρ_w	50%	30%	10%	50%	30%	10%	50%	30%	10%	50%	30%	10%	50%	30%	10%	0
ρ_{fc}	20%			20%			20%			20%			20%			0
RCR	RCR:Room Cavity Ratio						Ceiling Cavity Exitance Coefficients(CCEC)									
0.0																
1.0	.192	.192	.192	.164	.164	.164	.112	.112	.112	.064	.064	.064	.021	.021	.021	
2.0	.177	.133	.096	.152	.114	.083	.104	.079	.058	.060	.046	.034	.019	.015	.011	
3.0	.171	.116	.072	.146	.100	.062	.100	.069	.044	.058	.040	.026	.019	.013	.008	
4.0	.164	.103	.056	.140	.089	.049	.096	.062	.034	.056	.036	.020	.018	.012	.007	
5.0	.156	.092	.045	.134	.080	.040	.092	.056	.028	.053	.033	.017	.017	.011	.005	
6.0	.149	.084	.038	.128	.073	.033	.088	.051	.023	.051	.030	.014	.017	.010	.005	
7.0	.142	.077	.033	.122	.067	.028	.084	.047	.020	.049	.028	.012	.016	.009	.004	
8.0	.135	.072	.028	.116	.062	.025	.080	.044	.018	.047	.026	.010	.015	.008	.003	
9.0	.128	.067	.025	.111	.058	.022	.077	.041	.016	.045	.024	.009	.014	.008	.003	
10.0	.122	.062	.023	.105	.054	.020	.073	.038	.014	.043	.023	.008	.014	.007	.003	

C Range: 0 - 360DEG
 C Interval: 22.5DEG
 Test Speed: HIGH
 Temperature:25.2DEG
 Operators:Leo
 Test Date:2016-03-07

γ Range: 0 - 180DEG
 γ Interval: 1.0DEG
 Test System:EVERFINE GO-R5000_V2 SYSTEM V2.0.284
 Humidity:60.0%
 Test Distance:26.000m [K=1.3570]
 Remarks:

UGR(Unified Glare Rating) Table

Test:U:120.0V I:0.5123A P:61.08W PF:0.9937 Lamp Flux:7351.19x1 lm		
NAME: SNC-NWP-60W-4000K	TYPE:	WEIGHT:
SPEC.:	DIM.:	SERIAL No.:
MFR.: SNC OPTO ELECTRONIC CO.,LTD	SUR.:	PROTECTION ANGLE:

ceiling/cavity	0.7	0.7	0.5	0.5	0.3	0.7	0.7	0.5	0.5	0.3
walls	0.5	0.3	0.5	0.3	0.3	0.5	0.3	0.5	0.3	0.3
working plane	0.2	0.2	0.2	0.2	0.2	0.2	0.2	0.2	0.2	0.2
Room dimensions	Viewed crosswise					Viewed endwise				
x = 2H y = 2H	27.8	29.5	28.1	29.7	29.9	25.4	27.0	25.7	27.3	27.5
3H	31.6	33.1	31.9	33.4	33.6	25.3	26.8	25.6	27.1	27.3
4H	33.5	35.0	33.8	35.2	35.5	25.2	26.7	25.5	26.9	27.2
6H	34.1	35.4	34.4	35.7	36.0	25.1	26.5	25.4	26.7	27.0
8H	34.0	35.4	34.4	35.6	35.9	25.0	26.4	25.4	26.7	27.0
12H	34.0	35.2	34.3	35.6	35.9	25.0	26.3	25.3	26.6	26.9
4H 2H	28.9	30.3	29.2	30.6	30.9	27.2	28.6	27.5	28.9	29.2
3H	32.9	34.2	33.3	34.5	34.8	27.4	28.7	27.8	29.0	29.3
4H	35.2	36.4	35.6	36.7	37.1	27.4	28.5	27.7	28.9	29.2
6H	36.0	37.0	36.4	37.4	37.8	27.3	28.3	27.7	28.7	29.1
8H	36.0	36.9	36.4	37.3	37.7	27.2	28.2	27.6	28.6	29.0
12H	35.9	36.8	36.3	37.2	37.6	27.2	28.1	27.6	28.5	28.9
8H 4H	35.3	36.3	35.7	36.7	37.1	29.0	30.0	29.4	30.4	30.7
6H	36.2	37.0	36.6	37.4	37.8	28.9	29.8	29.4	30.2	30.6
8H	36.2	36.9	36.6	37.3	37.8	28.9	29.6	29.4	30.1	30.5
12H	36.1	36.7	36.6	37.2	37.7	28.9	29.5	29.4	29.9	30.4
12H 4H	35.3	36.2	35.7	36.6	37.0	29.2	30.1	29.7	30.5	30.9
6H	36.1	36.9	36.6	37.3	37.7	29.2	29.9	29.6	30.3	30.8
8H	36.1	36.7	36.6	37.2	37.7	29.1	29.8	29.6	30.2	30.7
Variations with the observer position at spacings:										
s = 1.0H	+ 0.2 / - 0.2					+ 0.2 / - 0.2				
1.5H	+ 0.1 / - 0.3					+ 0.9 / - 0.8				
2.0H	+ 0.6 / - 1.1					+ 0.9 / - 1.7				

CIE Pub.117 Corrected 7351 lm Total Lamp Luminous Flux.(8log(F/F0) = 6.9)

C Range: 0 - 360DEG
 C Interval: 22.5DEG
 Test Speed: HIGH
 Temperature:25.2DEG
 Operators:Leo
 Test Date:2016-03-07

γ Range: 0 - 180DEG
 γ Interval: 1.0DEG
 Test System:EVERFINE GO-R5000_V2 SYSTEM V2.0.284
 Humidity:60.0%
 Test Distance:26.000m [K=1.3570]
 Remarks:

UTILIZATION FACTORS TABLE

Test:U:120.0V I:0.5123A P:61.08W PF:0.9937 Lamp Flux:7351.19x1 lm		
NAME: SNC-NWP-60W-4000K	TYPE:	WEIGHT:
SPEC.:	DIM.:	SERIAL No.:
MFR.: SNC OPTO ELECTRONIC CO.,LTD	SUR.:	PROTECTION ANGLE:

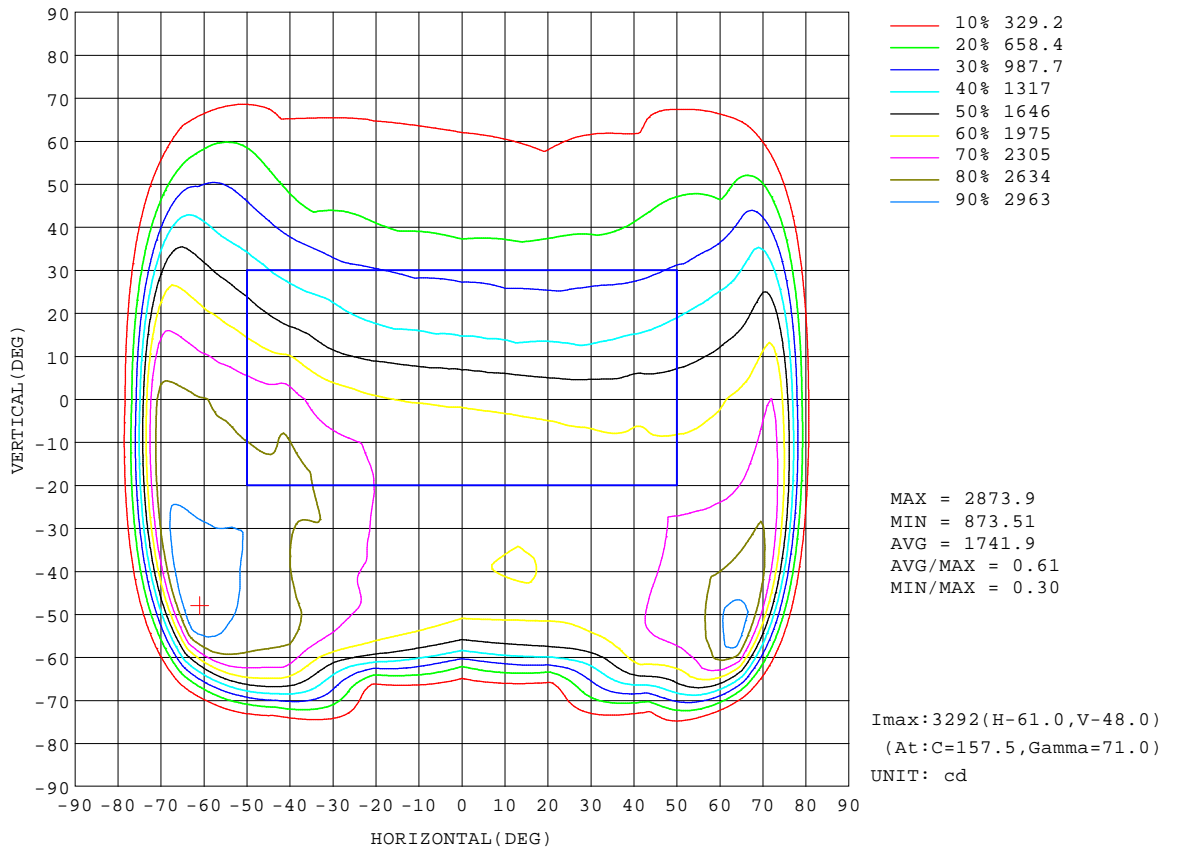
REFLECTANCE										
Ceiling	0.8	0.8	0.8	0.7	0.7	0.7	0.5	0.5	0.5	0
Walls	0.7	0.5	0.3	0.7	0.5	0.3	0.7	0.5	0.3	0
Working plane	0.2	0.2	0.2	0.2	0.2	0.2	0.2	0.2	0.2	0
ROOM INDEX	UTILIZATION FACTORS(PERCENT) $k(RI) \times RCR = 5$									
k = 0.60	52	39	32	51	39	32	50	39	32	25
0.80	62	49	41	61	49	41	59	48	40	33
1.00	71	58	50	69	57	50	67	59	49	41
1.25	78	66	58	77	65	58	74	64	57	49
1.50	84	72	64	82	71	64	79	70	63	55
2.00	91	82	74	89	80	74	86	78	72	64
2.50	96	87	81	94	86	80	90	83	78	69
3.00	100	92	86	98	91	85	93	88	83	74
4.00	105	98	93	102	97	92	98	93	89	80
5.00	108	102	98	105	100	96	100	97	93	84
ROOM INDEX	UF(total)									Direct
According to DIN EN 13032-2 2004			Suspended				SHRNOM = 1.25			

C Range: 0 - 360DEG
 C Interval: 22.5DEG
 Test Speed: HIGH
 Temperature:25.2DEG
 Operators:Leo
 Test Date:2016-03-07

γ Range: 0 - 180DEG
 γ Interval: 1.0DEG
 Test System:EVERFINE GO-R5000_V2 SYSTEM V2.0.284
 Humidity:60.0%
 Test Distance:26.000m [K=1.3570]
 Remarks:

ISOCANDELA DIAGRAM

Test:U:120.0V I:0.5123A P:61.08W PF:0.9937 Lamp Flux:7351.19x1 lm		
NAME: SNC-NWP-60W-4000K	TYPE:	WEIGHT:
SPEC.:	DIM.:	SERIAL No.:
MFR.: SNC OPTO ELECTRONIC CO.,LTD	SUR.:	PROTECTION ANGLE:



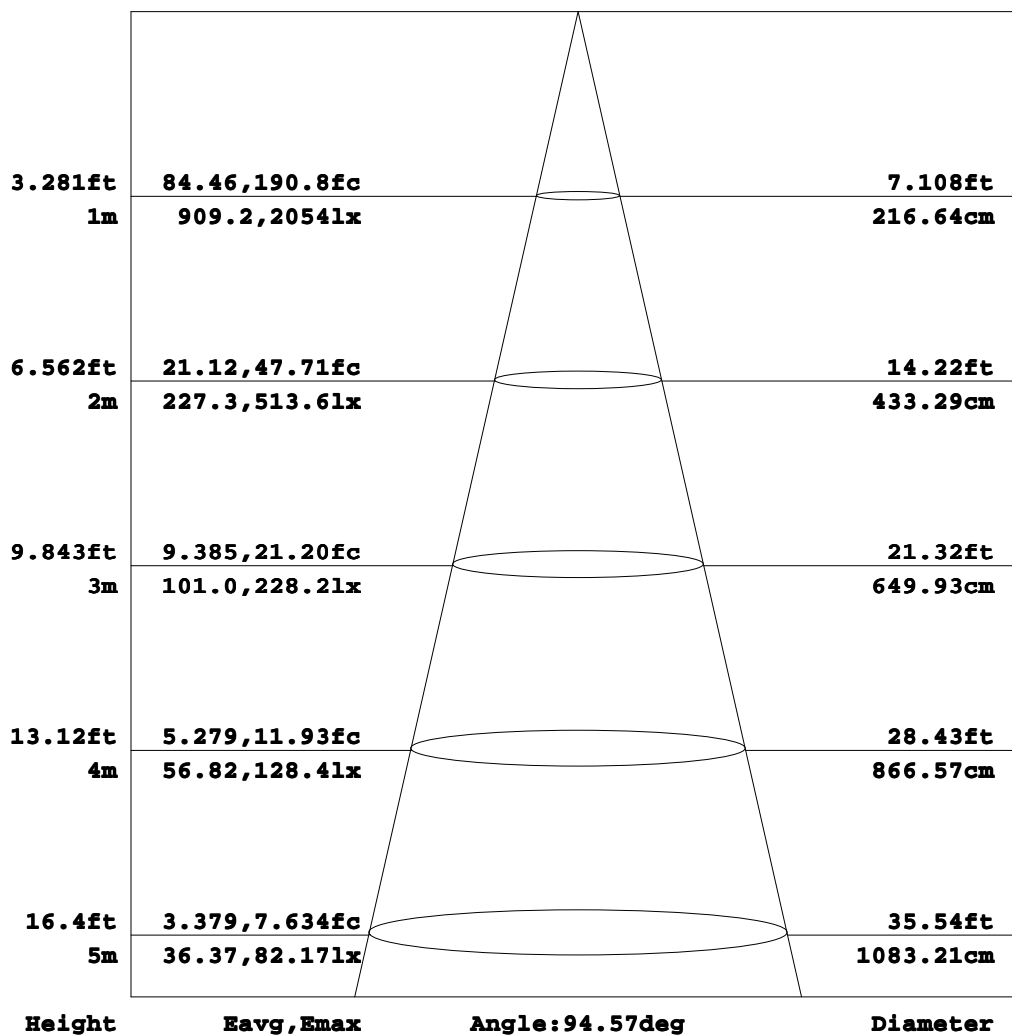
C Range: 0 - 360DEG
C Interval: 22.5DEG
Test Speed: HIGH
Temperature: 25.2DEG
Operators: Leo
Test Date: 2016-03-07

γ Range: 0 - 180DEG
γ Interval: 1.0DEG
Test System: EVERFINE GO-R5000_V2 SYSTEM V2.0.284
Humidity: 60.0%
Test Distance: 26.000m [K=1.3570]
Remarks:

AAI Figure

Test:U:120.0V I:0.5123A P:61.08W PF:0.9937 Lamp Flux:7351.19x1 lm		
NAME: SNC-NWP-60W-4000K	TYPE:	WEIGHT:
SPEC.:	DIM.:	SERIAL No.:
MFR.: SNC OPTO ELECTRONIC CO.,LTD	SUR.:	PROTECTION ANGLE:

Flux out:3523 lm



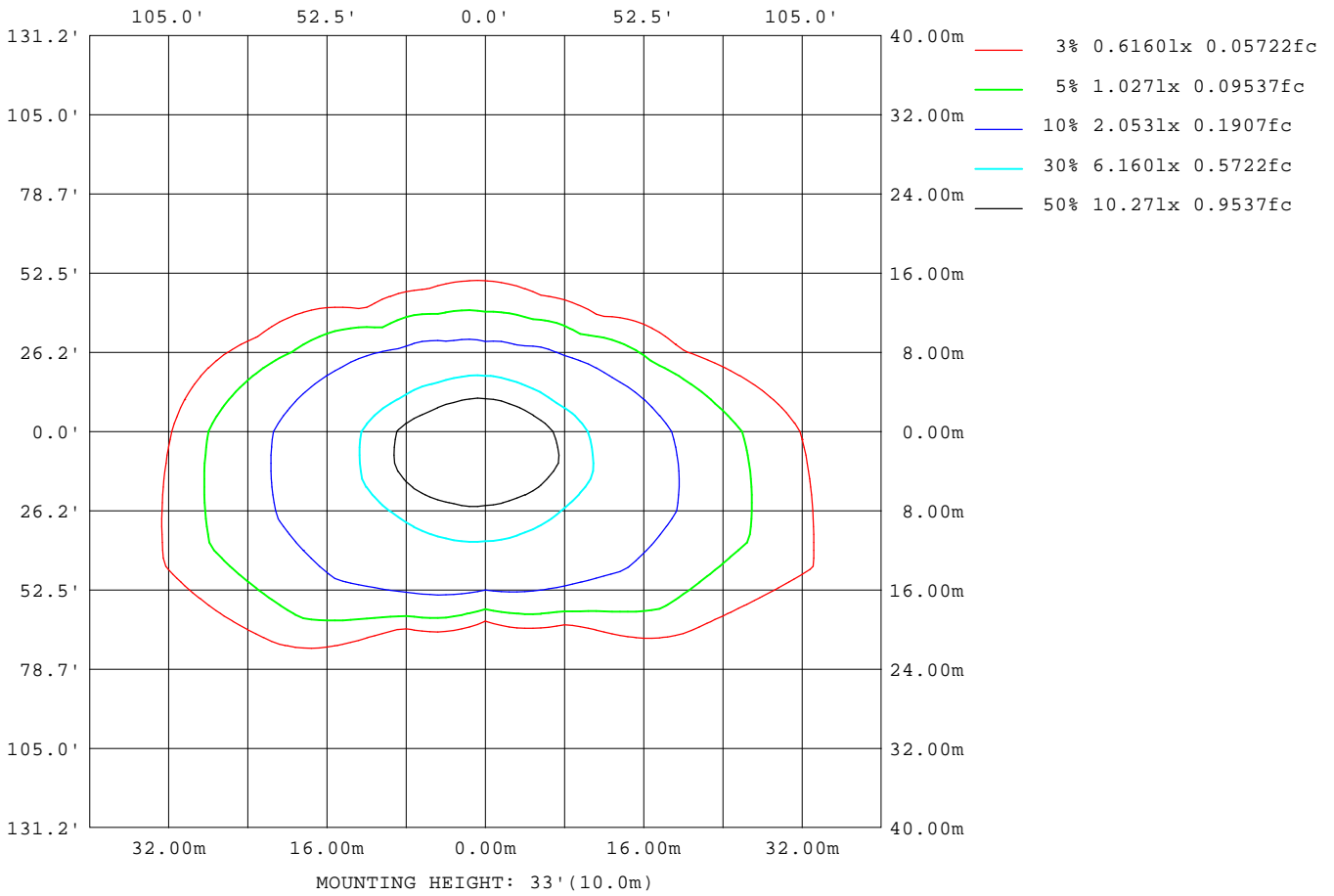
Note: The Curves indicate the illuminated area and the average illumination when the luminaire is at different distance.

C Range: 0 - 360DEG
 C Interval: 22.5DEG
 Test Speed: HIGH
 Temperature: 25.2DEG
 Operators: Leo
 Test Date: 2016-03-07

γ Range: 0 - 180DEG
 γ Interval: 1.0DEG
 Test System: EVERFINE GO-R5000_V2 SYSTEM V2.0.284
 Humidity: 60.0%
 Test Distance: 26.000m [K=1.3570]
 Remarks:

ISOLUX DIAGRAM

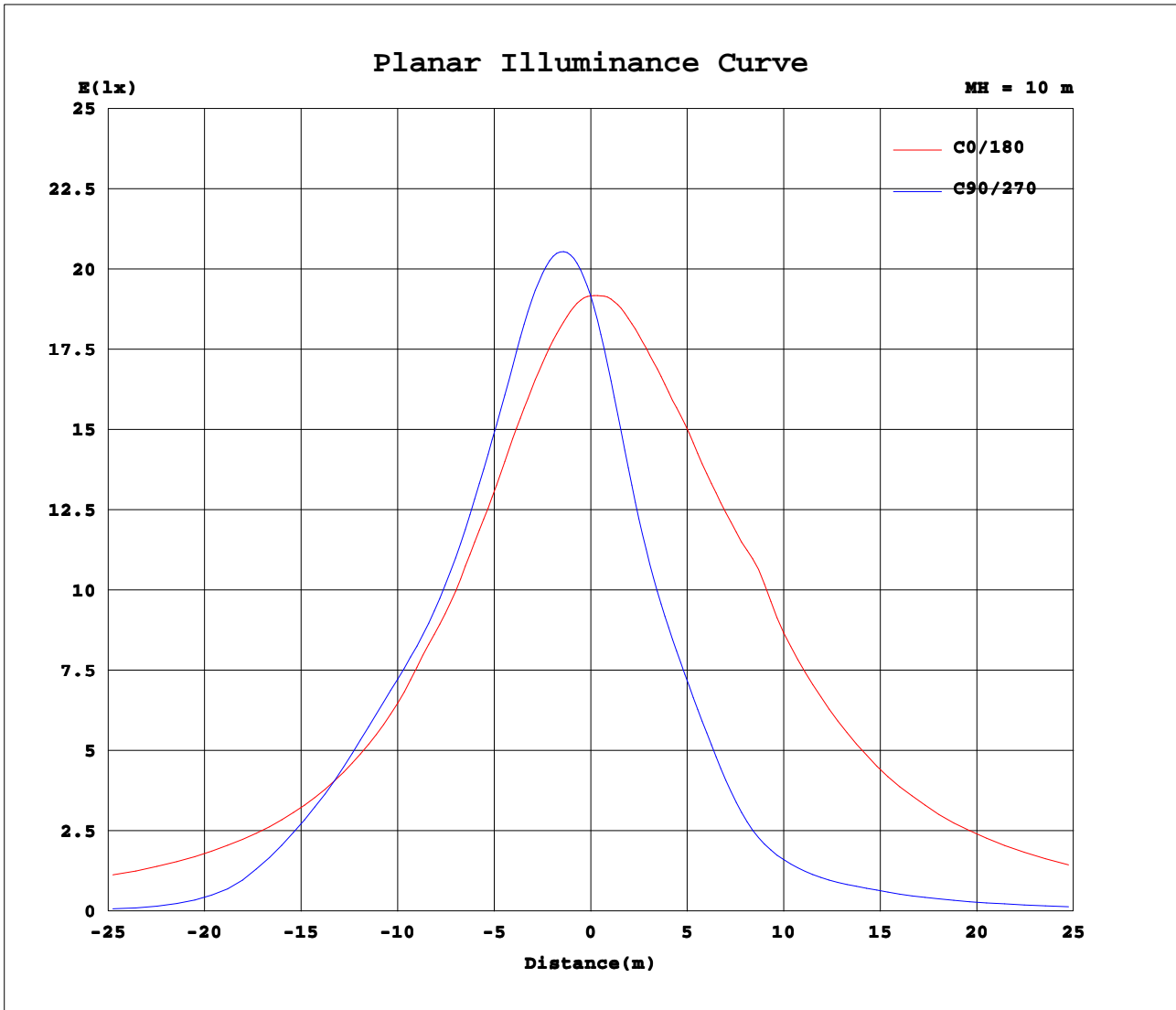
Test:U:120.0V I:0.5123A P:61.08W PF:0.9937 Lamp Flux:7351.19x1 lm		
NAME: SNC-NWP-60W-4000K	TYPE:	WEIGHT:
SPEC.:	DIM.:	SERIAL No.:
MFR.: SNC OPTO ELECTRONIC CO.,LTD	SUR.:	PROTECTION ANGLE:



C Range: 0 - 360DEG
C Interval: 22.5DEG
Test Speed: HIGH
Temperature: 25.2DEG
Operators: Leo
Test Date: 2016-03-07

γ Range: 0 - 180DEG
γ Interval: 1.0DEG
Test System: EVERFINE GO-R5000_V2 SYSTEM V2.0.284
Humidity: 60.0%
Test Distance: 26.000m [K=1.3570]
Remarks:

Planar Illuminance Curve



C Range: 0 - 360DEG
 C Interval: 22.5DEG
 Test Speed: HIGH
 Temperature: 25.2DEG
 Operators: Leo
 Test Date: 2016-03-07

γ Range: 0 - 180DEG
 γ Interval: 1.0DEG
 Test System: EVERFINE GO-R5000_V2 SYSTEM V2.0.284
 Humidity: 60.0%
 Test Distance: 26.000m [K=1.3570]
 Remarks:

LUMINOUS DISTRIBUTION INTENSITY DATA

Test:U:120.0V I:0.5123A P:61.08W PF:0.9937 Lamp Flux:7351.19x1 lm		
NAME: SNC-NWP-60W-4000K	TYPE:	WEIGHT:
SPEC.:	DIM.:	SERIAL No.:
MFR.: SNC OPTO ELECTRONIC CO.,LTD	SUR.:	PROTECTION ANGLE:

Table--1

UNIT: cd

C (DEG) \ γ (DEG)	0	23	45	68	90	113	135	158	180	203	225	248	270	293	315	338			
0	1915	1915	1915	1915	1915	1915	1915	1915	1915	1915	1915	1915	1915	1915	1915	1915			
5	1901	1958	2003	2035	2056	2053	2031	1989	1932	1863	1795	1745	1721	1732	1770	1840			
10	1881	1993	2067	2108	2144	2147	2122	2060	1948	1801	1653	1548	1503	1523	1601	1743			
15	1865	2024	2108	2144	2175	2202	2184	2139	1967	1735	1504	1360	1303	1321	1424	1637			
20	1848	2056	2126	2129	2152	2209	2249	2216	2005	1674	1372	1209	1153	1166	1266	1527			
25	1830	2077	2129	2085	2096	2189	2288	2302	2071	1611	1258	1094	1040	1047	1147	1417			
30	1825	2110	2109	2042	2049	2166	2311	2413	2144	1557	1166	989	912	926	1048	1320			
35	1811	2132	2101	1985	2002	2152	2358	2531	2257	1544	1103	864	742	785	961	1256			
40	1847	2194	2079	1952	1995	2123	2434	2716	2439	1534	1014	703	561	613	859	1191			
45	1831	2214	2058	1974	2044	2149	2449	2780	2449	1486	910	547	454	482	740	1127			
50	1844	2256	2058	2029	2010	2215	2443	2822	2513	1465	769	461	398	413	600	1083			
55	1878	2332	2134	1930	1723	2129	2536	2925	2577	1452	608	407	381	363	490	1035			
60	1941	2446	2231	1587	1053	1800	2655	3021	2641	1389	500	367	344	327	420	956			
65	2046	2578	2230	694	320	828	2648	3118	2709	1291	419	339	305	304	366	822			
70	2250	2843	1864	143	112	140	2262	3274	2727	1107	354	279	223	263	327	657			
75	1859	3217	819	76.4	70.4	79.9	1150	2713	1259	702	259	137	69.4	113	278	504			
80	438	1085	128	38.1	29.7	40.1	137	416	136	256	41.3	35.1	49.8	32.8	42.5	307			
85	22.8	50.6	9.97	0.00	0.00	0.01	9.40	38.2	19.8	20.9	12.9	10.6	10.4	8.93	12.3	17.6			
90	1.10	1.90	0.06	0.00	0.00	0.00	0.00	1.38	1.47	1.58	0.00	0.00	0.00	0.00	0.06	1.28			
95	1.57	1.00	0.00	0.00	0.00	0.00	0.00	0.58	1.89	2.84	0.48	0.00	0.00	0.00	0.90	2.60			
100	2.92	0.89	0.00	0.00	0.00	0.00	0.00	0.37	2.62	3.36	1.48	0.00	0.00	0.00	1.90	3.60			
105	3.71	1.25	0.00	0.00	0.00	0.00	0.00	0.58	3.24	3.88	2.32	0.05	0.00	0.43	2.63	4.28			
110	4.65	1.88	0.00	0.00	0.00	0.00	0.00	1.05	3.40	4.67	2.42	1.06	0.22	1.22	2.85	5.24			
115	5.12	2.35	0.00	0.00	0.00	0.00	0.00	1.22	3.19	4.67	2.74	1.38	1.07	1.59	3.32	5.44			
120	5.43	2.36	0.42	0.00	0.00	0.00	0.00	1.32	2.87	4.04	3.00	2.12	1.88	2.23	3.16	4.71			
125	5.43	2.57	0.42	0.00	0.00	0.00	0.00	1.32	2.77	3.51	2.48	2.65	2.62	2.92	3.00	4.33			
130	5.17	2.78	0.42	0.00	0.00	0.00	0.00	1.53	2.45	3.04	2.48	2.96	3.05	3.19	2.95	3.44			
135	4.23	2.26	0.47	0.21	0.00	0.00	0.00	1.48	2.35	2.46	2.37	2.86	3.05	3.03	2.53	3.12			
140	3.92	2.25	0.53	0.37	0.05	0.16	0.00	1.43	2.14	2.46	1.95	2.65	2.94	2.98	2.48	3.12			
145	3.45	1.84	0.63	0.58	0.27	0.48	0.10	1.37	2.14	2.25	2.00	2.59	2.89	2.98	2.74	2.75			
150	3.03	1.73	1.21	0.64	0.59	0.69	0.68	1.37	2.09	2.15	2.21	2.59	2.83	2.98	3.00	2.33			
155	2.46	1.57	1.53	1.22	0.91	0.96	1.16	1.53	1.72	2.15	2.16	2.43	2.35	2.76	2.63	2.27			
160	1.93	1.57	1.85	1.27	1.23	1.27	1.26	1.53	2.04	2.04	1.95	2.43	2.24	2.55	2.27	2.27			
165	2.14	1.68	2.16	1.53	1.44	1.38	1.42	1.53	2.04	2.10	2.00	2.49	2.25	2.55	2.27	2.28			
170	2.14	2.04	2.79	2.12	2.08	2.07	2.05	1.80	2.40	2.31	2.69	3.12	3.10	3.40	3.06	3.07			
175	2.19	2.25	3.00	2.59	2.88	2.44	2.48	2.12	2.30	2.20	2.95	3.12	2.99	3.29	2.90	3.01			
180	2.14	2.36	3.00	2.54	3.15	2.44	2.79	2.17	2.04	2.15	2.42	3.02	2.56	3.03	2.42	2.70			

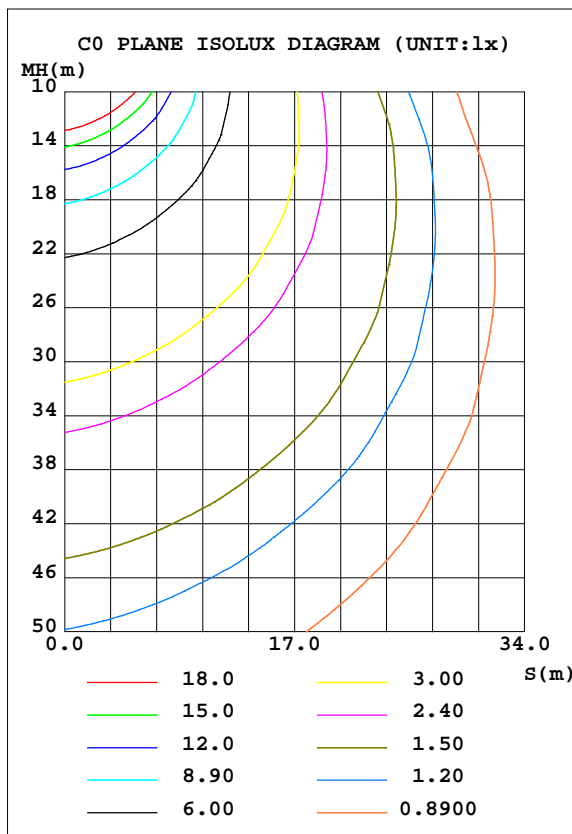
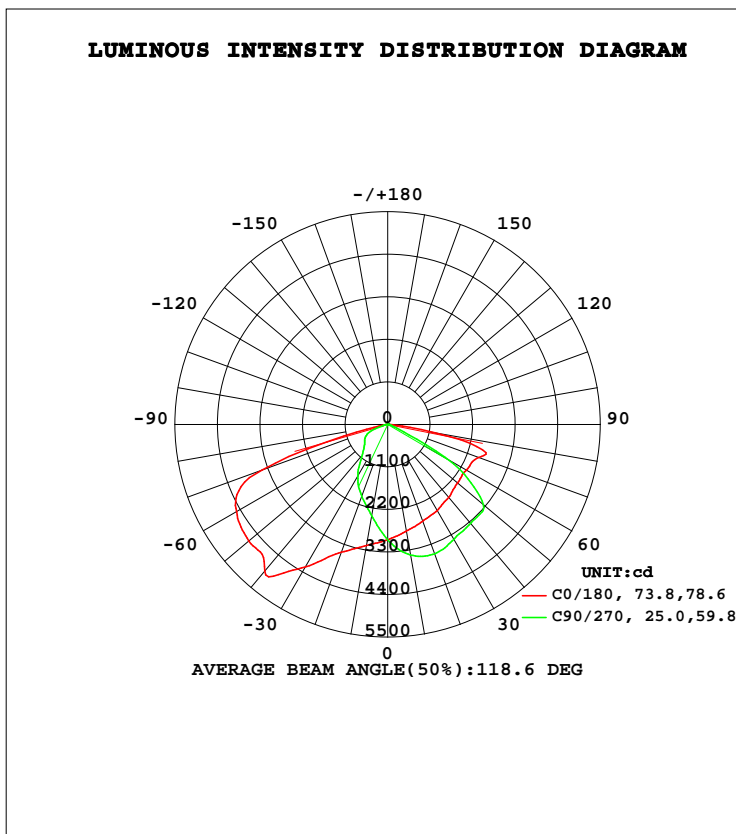
C Range: 0 - 360DEG
 C Interval: 22.5DEG
 Test Speed: HIGH
 Temperature: 25.2DEG
 Operators: Leo
 Test Date: 2016-03-07

γ Range: 0 - 180DEG
 γ Interval: 1.0DEG
 Test System: EVERFINE GO-R5000_V2 SYSTEM V2.0.284
 Humidity: 60.0%
 Test Distance: 26.000m [K=1.3570]
 Remarks:

LUMINAIRE PHOTOMETRIC TEST REPORT

Test:U:120.0V I:0.8456A P:100.3W PF:0.9886 Lamp Flux:12251x1 lm		
NAME: SNC-NWP-100W-4000K	TYPE:	WEIGHT:
SPEC.:	DIM.:	SERIAL No.:
MFR.: SNC OPTO ELECTRONIC CO.,LTD	SUR.:	PROTECTION ANGLE:

DATA OF LAMP		PHOTOMETRIC DATA Eff: 122.14 lm/W			
MODEL	100W	Imax(cd)	5915	S/MH(C0/180)	2.14
NOMINAL POWER(W)	100	LOR(%)	100.0	S/MH(C90/270)	0.82
RATED VOLTAGE(V)	120	TOTAL FLUX(lm)	12251	η UP, DN(C0-180)	0.1, 65.4
NOMINAL FLUX(lm)	12251	CIE CLASS	DIRECT	η UP, DN(C180-360)	0.1, 34.4
LAMPS INSIDE	1	η up(%)	0.2	CIBSE SHR NOM	1.50
TEST VOLTAGE(V)	120.0	η down(%)	99.8	CIBSE SHR MAX	1.55



C Range: 0 - 360DEG
 C Interval: 22.5DEG
 Test Speed: HIGH
 Temperature: 25.2DEG
 Operators: Leo
 Test Date: 2016-03-07

γ Range: 0 - 180DEG
 γ Interval: 1.0DEG
 Test System: EVERFINE GO-R5000_V2 SYSTEM V2.0.284
 Humidity: 60.0%
 Test Distance: 26.000m [K=1.3570]
 Remarks:

ZONAL FLUX DIAGRAM

ZONAL FLUX DIAGRAM:

γ	C0	C45	C90	C135	C180	C225	C270	C315	γ	Φ zone	Φ total	%lum,lamp
10	2804	3214	3428	3478	3176	2682	2396	2451	0- 10	283.3	283.3	2.31,2.31
20	2660	3294	3559	3939	3518	2447	1976	2009	10- 20	832.7	1116	9.11,9.11
30	2570	3287	3429	4470	4252	2308	1554	1686	20- 30	1357	2473	20.2,20.2
40	2462	3208	3337	5258	4946	1947	1024	1335	30- 40	1851	4324	35.3,35.3
50	2360	3150	3234	5003	4686	1470	785.2	937.8	40- 50	2184	6508	53.1,53.1
60	2358	3291	1720	4985	4514	1060	668.7	723.4	50- 60	2340	8847	72.2,72.2
70	2514	2638	154.0	4072	3455	711.7	352.9	581.1	60- 70	2077	10925	89.2,89.2
80	1251	154.1	46.29	515.8	152.1	97.97	80.40	104.8	70- 80	1188	12112	98.9,98.9
90	2.789	1.429	0	1.382	2.888	0.3712	0	1.065	80- 90	115.6	12228	99.8,99.8
100	5.191	0.5801	0	0.2649	3.943	3.217	0	5.034	90-100	1.818	12230	99.8,99.8
110	8.871	1.159	0	0.4238	5.406	4.220	0.9053	6.783	100-110	3.087	12233	99.9,99.9
120	10.97	2.320	0.2624	0.7942	4.565	5.273	3.655	8.104	110-120	4.046	12237	99.9,99.9
130	11.18	2.795	1.108	1.165	4.145	4.588	5.858	7.571	120-130	4.229	12241	99.9,99.9
140	9.083	2.900	1.372	1.324	3.938	3.691	5.701	6.039	130-140	3.540	12245	99.9,99.9
150	6.987	3.893	2.425	2.219	3.938	4.113	5.648	7.151	140-150	2.743	12247	100,100
160	4.671	4.639	3.061	3.232	3.729	3.744	4.698	5.138	150-160	1.974	12249	100,100
170	4.935	5.588	4.431	4.714	4.673	4.908	6.072	6.305	160-170	1.216	12251	100,100
180	4.198	5.694	5.701	5.456	4.095	4.904	5.332	5.351	170-180	0.5118	12251	100,100
DEG	LUMINOUS INTENSITY:cd									UNIT:lm		

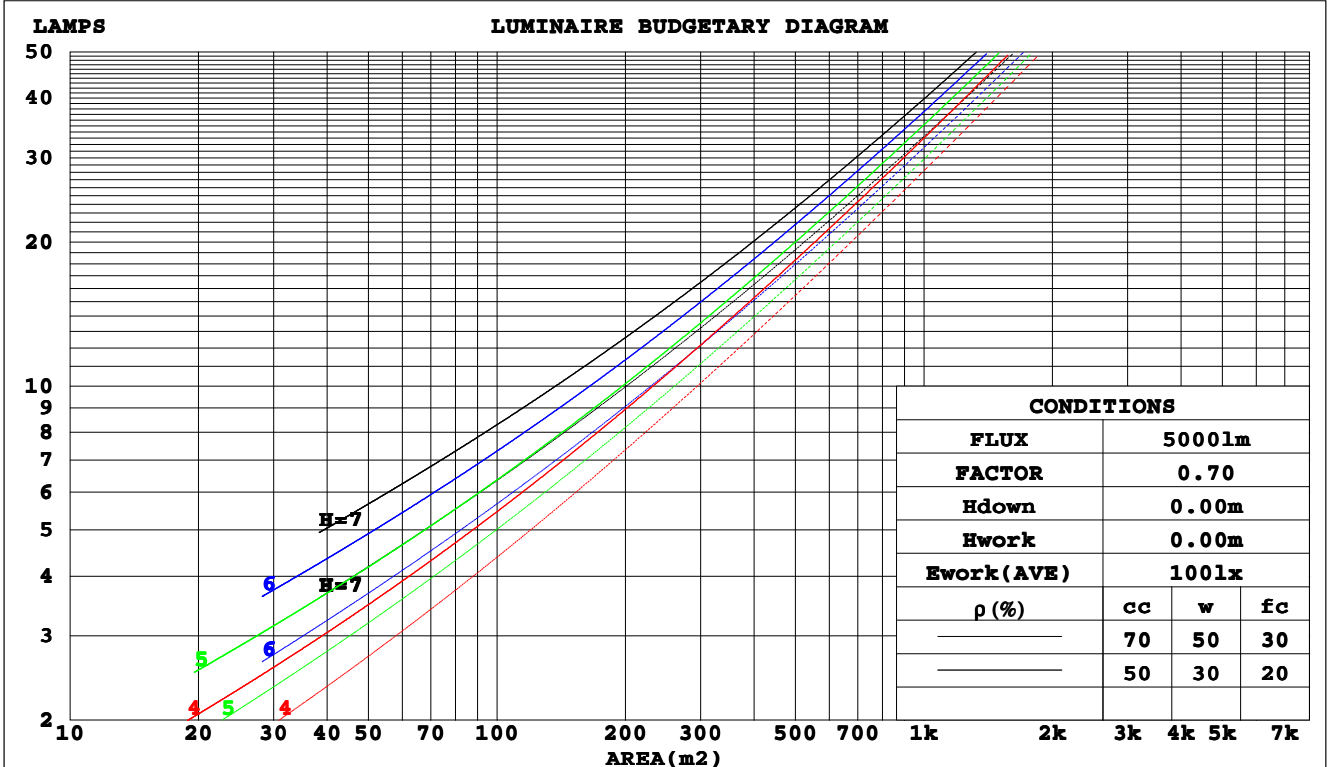
C Range: 0 - 360DEG
 C Interval: 22.5DEG
 Test Speed: HIGH
 Temperature:25.2DEG
 Operators:Leo
 Test Date:2016-03-07

γ Range: 0 - 180DEG
 γ Interval: 1.0DEG
 Test System:EVERFINE GO-R5000_V2 SYSTEM V2.0.284
 Humidity:60.0%
 Test Distance:26.000m [K=1.3570]
 Remarks:

CU AND LUMINAIRE BUDGETARY ESTIMATE DIAGRAM

Test:U:120.0V I:0.8456A P:100.3W PF:0.9886 Lamp Flux:1225lx1 lm		
NAME: SNC-NWP-100W-4000K	TYPE:	WEIGHT:
SPEC.:	DIM.:	SERIAL No.:
MFR.: SNC OPTO ELECTRONIC CO.,LTD	SUR.:	PROTECTION ANGLE:

ρ_{cc}	80%			70%			50%			30%			10%			0
ρ_w	50%	30%	10%	50%	30%	10%	50%	30%	10%	50%	30%	10%	50%	30%	10%	0
ρ_{fc}	20%			20%			20%			20%			20%			0
RCR	RCR:Room Cavity Ratio						Coefficients of Utilization(CU)									
0.0	1.19	1.19	1.19	1.16	1.16	1.16	1.11	1.11	1.11	1.06	1.06	1.06	1.02	1.02	1.02	.00
1.0	1.03	.98	.94	1.00	.96	.92	.96	.93	.89	.92	.89	.87	.88	.86	.84	.82
2.0	.88	.80	.74	.86	.79	.73	.82	.76	.71	.79	.74	.70	.76	.72	.68	.66
3.0	.76	.67	.60	.74	.66	.59	.71	.64	.58	.68	.62	.57	.65	.60	.56	.54
4.0	.66	.57	.49	.65	.56	.49	.62	.54	.48	.60	.53	.47	.57	.52	.47	.44
5.0	.58	.49	.41	.57	.48	.41	.55	.47	.41	.53	.46	.40	.51	.45	.40	.37
6.0	.52	.42	.35	.51	.42	.35	.49	.41	.35	.47	.40	.35	.46	.39	.34	.32
7.0	.47	.37	.31	.46	.37	.31	.44	.36	.30	.43	.35	.30	.41	.35	.30	.28
8.0	.42	.33	.27	.42	.33	.27	.40	.32	.27	.39	.32	.27	.38	.31	.26	.24
9.0	.39	.30	.24	.38	.30	.24	.37	.29	.24	.36	.29	.24	.35	.28	.23	.21
10.0	.35	.27	.21	.35	.27	.21	.34	.26	.21	.33	.26	.21	.32	.26	.21	.19



C Range: 0 - 360DEG
 C Interval: 22.5DEG
 Test Speed: HIGH
 Temperature: 25.2DEG
 Operators: Leo
 Test Date: 2016-03-07

γ Range: 0 - 180DEG
 γ Interval: 1.0DEG
 Test System: EVERFINE GO-R5000_V2 SYSTEM V2.0.284
 Humidity: 60.0%
 Test Distance: 26.000m [K=1.3570]
 Remarks:

WEC AND CCEC

Test:U:120.0V I:0.8456A P:100.3W PF:0.9886 Lamp Flux:1225lx1 lm		
NAME: SNC-NWP-100W-4000K	TYPE:	WEIGHT:
SPEC.:	DIM.:	SERIAL No.:
MFR.: SNC OPTO ELECTRONIC CO.,LTD	SUR.:	PROTECTION ANGLE:

ρ_{cc}	80%			70%			50%			30%			10%			0
ρ_w	50%	30%	10%	50%	30%	10%	50%	30%	10%	50%	30%	10%	50%	30%	10%	0
ρ_{fc}	20%			20%			20%			20%			20%			0
RCR	RCR:Room Cavity Ratio						Wall Exitance Coefficients(WEC)									
0.0																
1.0	.332	.189	.060	.325	.185	.059	.311	.178	.057	.299	.172	.055	.287	.167	.054	
2.0	.317	.173	.053	.310	.171	.053	.298	.166	.051	.287	.161	.050	.277	.157	.049	
3.0	.293	.156	.047	.287	.154	.046	.276	.150	.045	.266	.146	.045	.257	.142	.044	
4.0	.269	.140	.041	.264	.138	.041	.254	.135	.040	.245	.132	.040	.237	.129	.039	
5.0	.247	.126	.036	.243	.125	.036	.234	.122	.036	.226	.119	.036	.219	.117	.035	
6.0	.228	.114	.033	.224	.113	.033	.216	.111	.032	.209	.109	.032	.203	.107	.032	
7.0	.211	.104	.030	.208	.103	.029	.201	.102	.029	.194	.100	.029	.189	.098	.029	
8.0	.196	.096	.027	.193	.095	.027	.187	.093	.027	.181	.092	.026	.176	.090	.026	
9.0	.183	.089	.025	.180	.088	.025	.175	.086	.025	.170	.085	.024	.165	.084	.024	
10.0	.172	.082	.023	.169	.082	.023	.164	.080	.023	.160	.079	.023	.155	.078	.022	

ρ_{cc}	80%			70%			50%			30%			10%			0
ρ_w	50%	30%	10%	50%	30%	10%	50%	30%	10%	50%	30%	10%	50%	30%	10%	0
ρ_{fc}	20%			20%			20%			20%			20%			0
RCR	RCR:Room Cavity Ratio						Ceiling Cavity Exitance Coefficients(CCEC)									
0.0	.192	.192	.192	.164	.164	.164	.112	.112	.112	.064	.064	.064	.021	.021	.021	
1.0	.183	.157	.134	.157	.135	.115	.107	.093	.080	.062	.054	.046	.020	.017	.015	
2.0	.177	.133	.096	.152	.115	.083	.104	.079	.058	.060	.046	.034	.019	.015	.011	
3.0	.170	.116	.073	.146	.100	.063	.100	.069	.044	.058	.041	.026	.019	.013	.009	
4.0	.163	.103	.057	.140	.089	.049	.096	.062	.035	.056	.036	.021	.018	.012	.007	
5.0	.156	.093	.046	.134	.080	.040	.092	.056	.028	.053	.033	.017	.017	.011	.006	
6.0	.149	.085	.039	.128	.073	.034	.088	.051	.024	.051	.030	.014	.016	.010	.005	
7.0	.142	.078	.033	.122	.067	.029	.084	.047	.020	.049	.028	.012	.016	.009	.004	
8.0	.135	.072	.029	.116	.062	.025	.080	.044	.018	.047	.026	.011	.015	.008	.004	
9.0	.128	.067	.026	.111	.058	.022	.077	.041	.016	.045	.024	.009	.014	.008	.003	
10.0	.122	.063	.023	.106	.055	.020	.073	.038	.014	.043	.023	.009	.014	.007	.003	

C Range: 0 - 360DEG
 C Interval: 22.5DEG
 Test Speed: HIGH
 Temperature:25.2DEG
 Operators:Leo
 Test Date:2016-03-07

γ Range: 0 - 180DEG
 γ Interval: 1.0DEG
 Test System:EVERFINE GO-R5000_V2 SYSTEM V2.0.284
 Humidity:60.0%
 Test Distance:26.000m [K=1.3570]
 Remarks:

UGR(Unified Glare Rating) Table

Test:U:120.0V I:0.8456A P:100.3W PF:0.9886 Lamp Flux:1225lx1 lm		
NAME: SNC-NWP-100W-4000K	TYPE:	WEIGHT:
SPEC.:	DIM.:	SERIAL No.:
MFR.: SNC OPTO ELECTRONIC CO.,LTD	SUR.:	PROTECTION ANGLE:

ceiling/cavity	0.7	0.7	0.5	0.5	0.3	0.7	0.7	0.5	0.5	0.3
walls	0.5	0.3	0.5	0.3	0.3	0.5	0.3	0.5	0.3	0.3
working plane	0.2	0.2	0.2	0.2	0.2	0.2	0.2	0.2	0.2	0.2
Room dimensions	Viewed crosswise					Viewed endwise				
x = 2H y = 2H	28.4	30.0	28.6	30.2	30.4	26.5	28.2	26.8	28.4	28.6
3H	31.9	33.4	32.2	33.6	33.9	26.4	27.9	26.7	28.2	28.4
4H	33.9	35.3	34.2	35.6	35.9	26.3	27.8	26.6	28.0	28.3
6H	35.1	36.5	35.5	36.8	37.1	26.2	27.6	26.5	27.8	28.1
8H	35.2	36.5	35.5	36.8	37.1	26.1	27.5	26.5	27.8	28.1
12H	35.1	36.4	35.5	36.7	37.0	26.1	27.4	26.5	27.7	28.0
4H 2H	29.4	30.9	29.8	31.2	31.4	28.1	29.5	28.4	29.8	30.1
3H	33.4	34.7	33.8	35.0	35.3	28.3	29.6	28.7	29.9	30.2
4H	35.9	37.1	36.3	37.4	37.8	28.2	29.4	28.6	29.7	30.1
6H	37.5	38.5	37.9	38.9	39.3	28.1	29.2	28.6	29.5	29.9
8H	37.6	38.5	38.0	38.9	39.3	28.1	29.1	28.5	29.4	29.8
12H	37.6	38.4	38.0	38.8	39.2	28.1	28.9	28.5	29.3	29.7
8H 4H	36.1	37.0	36.5	37.4	37.8	29.9	30.9	30.4	31.3	31.7
6H	37.9	38.7	38.4	39.1	39.5	29.9	30.7	30.3	31.1	31.5
8H	38.1	38.8	38.5	39.2	39.7	29.8	30.5	30.3	31.0	31.4
12H	38.1	38.7	38.6	39.1	39.6	29.8	30.4	30.3	30.9	31.3
12H 4H	36.0	36.9	36.4	37.3	37.7	30.5	31.4	31.0	31.8	32.2
6H	37.9	38.6	38.3	39.0	39.5	30.5	31.2	31.0	31.6	32.1
8H	38.1	38.7	38.5	39.1	39.6	30.5	31.1	30.9	31.5	32.0
Variations with the observer position at spacings:										
s = 1.0H	+ 0.1 / - 0.1					+ 0.1 / - 0.1				
1.5H	+ 0.1 / - 0.3					+ 0.7 / - 0.7				
2.0H	+ 0.5 / - 1.1					+ 0.7 / - 1.5				

CIE Pub.117 Corrected 12251 lm Total Lamp Luminous Flux.(8log(F/F0) = 8.7)

C Range: 0 - 360DEG
 C Interval: 22.5DEG
 Test Speed: HIGH
 Temperature:25.2DEG
 Operators:Leo
 Test Date:2016-03-07

γ Range: 0 - 180DEG
 γ Interval: 1.0DEG
 Test System:EVERFINE GO-R5000_V2 SYSTEM V2.0.284
 Humidity:60.0%
 Test Distance:26.000m [K=1.3570]
 Remarks:

UTILIZATION FACTORS TABLE

Test:U:120.0V I:0.8456A P:100.3W PF:0.9886 Lamp Flux:1225lx1 lm		
NAME: SNC-NWP-100W-4000K	TYPE:	WEIGHT:
SPEC.:	DIM.:	SERIAL No.:
MFR.: SNC OPTO ELECTRONIC CO.,LTD	SUR.:	PROTECTION ANGLE:

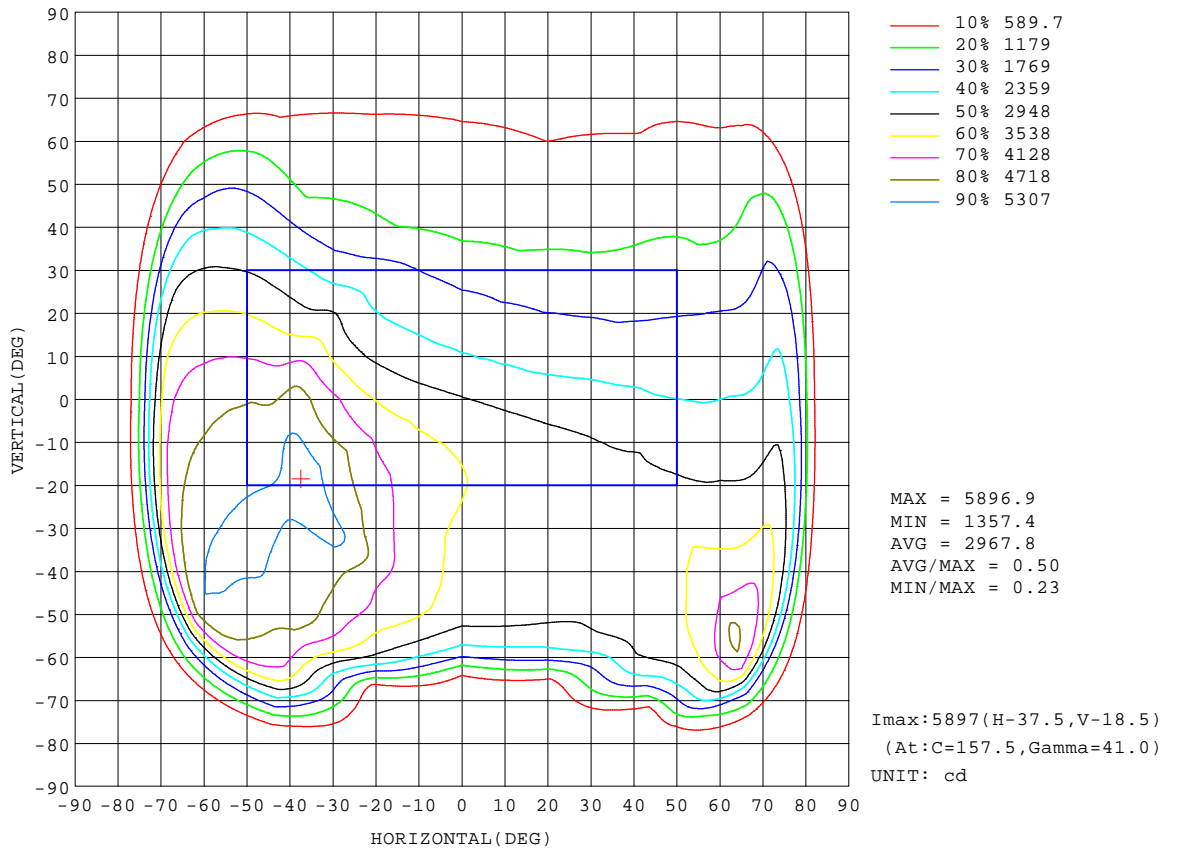
REFLECTANCE										
Ceiling	0.8	0.8	0.8	0.7	0.7	0.7	0.5	0.5	0.5	0
Walls	0.7	0.5	0.3	0.7	0.5	0.3	0.7	0.5	0.3	0
Working plane	0.2	0.2	0.2	0.2	0.2	0.2	0.2	0.2	0.2	0
ROOM INDEX	UTILIZATION FACTORS(PERCENT) $k(RI) \times RCR = 5$									
k = 0.60	52	40	32	51	39	32	50	39	32	25
0.80	62	50	42	61	49	41	59	48	41	33
1.00	71	59	51	70	58	50	67	60	50	42
1.25	79	67	59	77	66	59	74	65	58	50
1.50	84	73	65	82	72	65	79	70	64	56
2.00	92	82	75	90	81	74	86	79	73	64
2.50	96	88	81	94	86	80	90	84	78	70
3.00	100	93	87	98	91	86	94	88	83	74
4.00	105	99	94	102	97	92	98	93	90	80
5.00	108	103	98	105	101	97	101	97	93	84
ROOM INDEX	UF(total)									Direct
According to DIN EN 13032-2 2004			Suspended				SHRNOM = 1.25			

C Range: 0 - 360DEG
 C Interval: 22.5DEG
 Test Speed: HIGH
 Temperature:25.2DEG
 Operators:Leo
 Test Date:2016-03-07

γ Range: 0 - 180DEG
 γ Interval: 1.0DEG
 Test System:EVERFINE GO-R5000_V2 SYSTEM V2.0.284
 Humidity:60.0%
 Test Distance:26.000m [K=1.3570]
 Remarks:

ISOCANDELA DIAGRAM

Test:U:120.0V I:0.8456A P:100.3W PF:0.9886 Lamp Flux:1225lx1 lm		
NAME: SNC-NWP-100W-4000K	TYPE:	WEIGHT:
SPEC.:	DIM.:	SERIAL No.:
MFR.: SNC OPTO ELECTRONIC CO.,LTD	SUR.:	PROTECTION ANGLE:



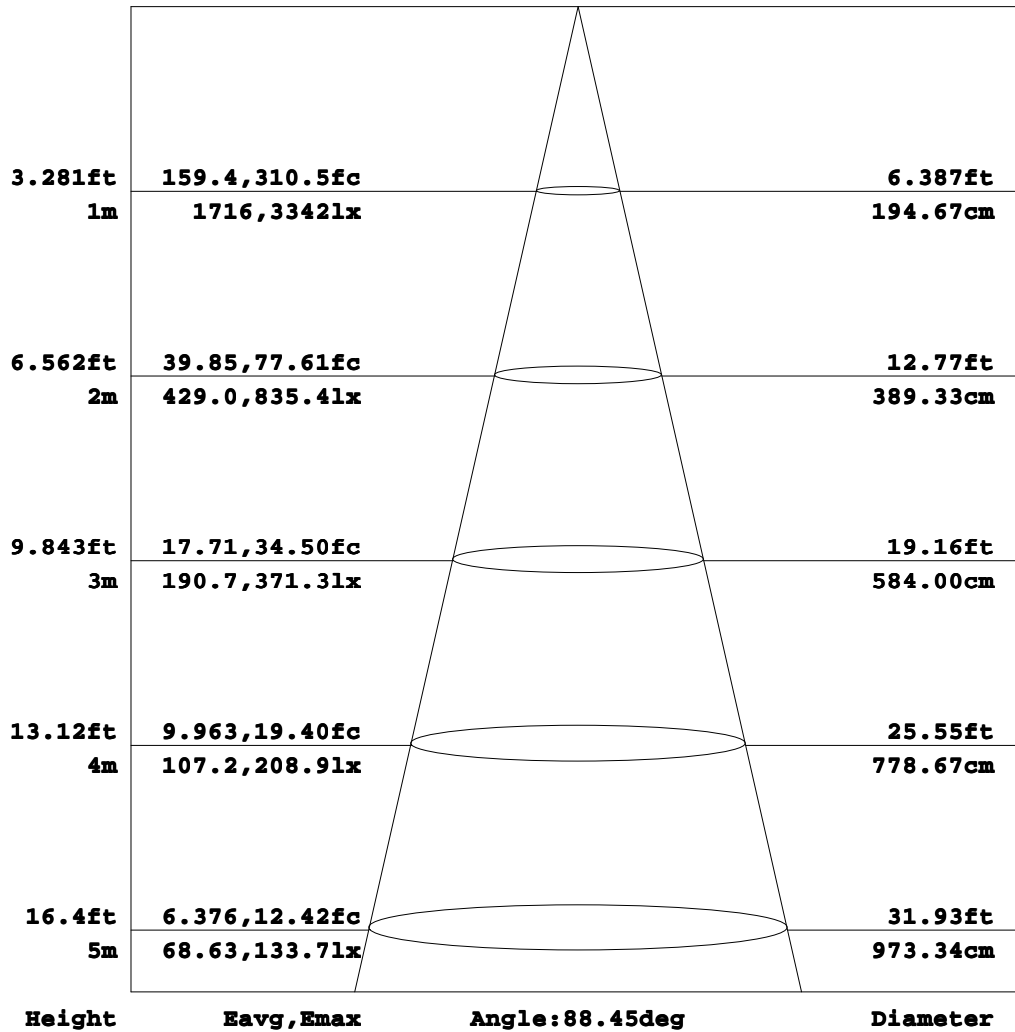
C Range: 0 - 360DEG
C Interval: 22.5DEG
Test Speed: HIGH
Temperature:25.2DEG
Operators:Leo
Test Date:2016-03-07

γ Range: 0 - 180DEG
γ Interval: 1.0DEG
Test System:EVERFINE GO-R5000_V2 SYSTEM V2.0.284
Humidity:60.0%
Test Distance:26.000m [K=1.3570]
Remarks:

AAI Figure

Test:U:120.0V I:0.8456A P:100.3W PF:0.9886 Lamp Flux:1225lx1 lm		
NAME: SNC-NWP-100W-4000K	TYPE:	WEIGHT:
SPEC.:	DIM.:	SERIAL No.:
MFR.: SNC OPTO ELECTRONIC CO.,LTD	SUR.:	PROTECTION ANGLE:

Flux out:5391 lm



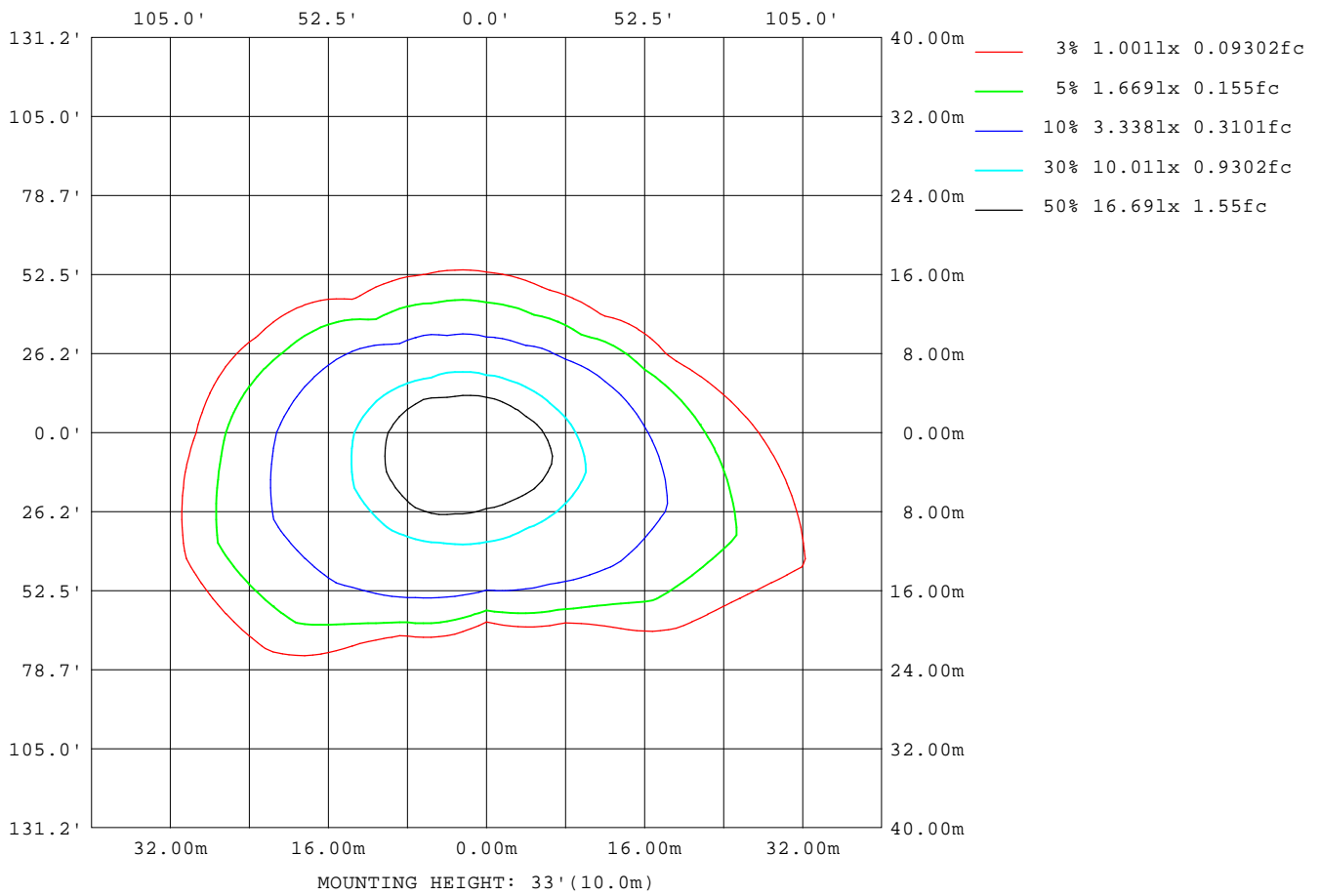
Note:The Curves indicate the illuminated area and the average illumination when the luminaire is at different distance.

C Range: 0 - 360DEG
 C Interval: 22.5DEG
 Test Speed: HIGH
 Temperature:25.2DEG
 Operators:Leo
 Test Date:2016-03-07

γ Range: 0 - 180DEG
 γ Interval: 1.0DEG
 Test System:EVERFINE GO-R5000_V2 SYSTEM V2.0.284
 Humidity:60.0%
 Test Distance:26.000m [K=1.3570]
 Remarks:

ISOLUX DIAGRAM

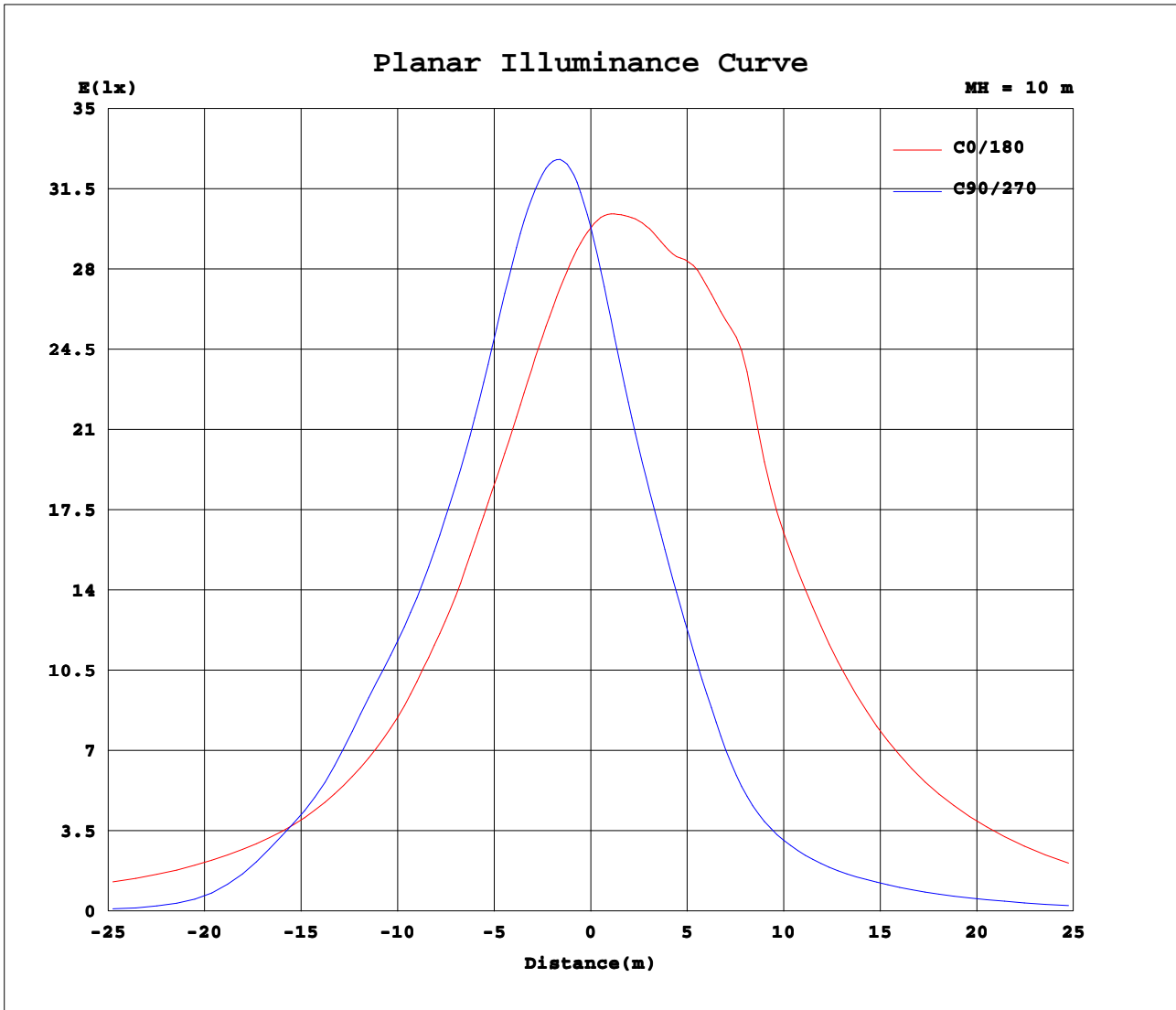
Test:U:120.0V I:0.8456A P:100.3W PF:0.9886 Lamp Flux:1225lx1 lm		
NAME: SNC-NWP-100W-4000K	TYPE:	WEIGHT:
SPEC.:	DIM.:	SERIAL No.:
MFR.: SNC OPTO ELECTRONIC CO.,LTD	SUR.:	PROTECTION ANGLE:



C Range: 0 - 360DEG
C Interval: 22.5DEG
Test Speed: HIGH
Temperature: 25.2DEG
Operators: Leo
Test Date: 2016-03-07

γ Range: 0 - 180DEG
γ Interval: 1.0DEG
Test System: EVERFINE GO-R5000_V2 SYSTEM V2.0.284
Humidity: 60.0%
Test Distance: 26.000m [K=1.3570]
Remarks:

Planar Illuminance Curve



C Range: 0 - 360DEG
 C Interval: 22.5DEG
 Test Speed: HIGH
 Temperature: 25.2DEG
 Operators: Leo
 Test Date: 2016-03-07

γ Range: 0 - 180DEG
 γ Interval: 1.0DEG
 Test System: EVERFINE GO-R5000_V2 SYSTEM V2.0.284
 Humidity: 60.0%
 Test Distance: 26.000m [K=1.3570]
 Remarks:

LUMINOUS DISTRIBUTION INTENSITY DATA

Test:U:120.0V I:0.8456A P:100.3W PF:0.9886 Lamp Flux:1225lx1 lm		
NAME: SNC-NWP-100W-4000K	TYPE:	WEIGHT:
SPEC.:	DIM.:	SERIAL No.:
MFR.: SNC OPTO ELECTRONIC CO.,LTD	SUR.:	PROTECTION ANGLE:

Table--1

UNIT: cd

C (DEG) \ γ (DEG)	0	23	45	68	90	113	135	158	180	203	225	248	270	293	315	338			
0	2980	2980	2980	2980	2980	2980	2980	2980	2980	2980	2980	2980	2980	2980	2980	2980			
5	2890	3006	3112	3196	3245	3274	3247	3183	3073	2954	2831	2743	2680	2666	2707	2786			
10	2804	3027	3214	3340	3428	3496	3478	3389	3176	2926	2682	2506	2396	2377	2451	2600			
15	2732	3054	3266	3409	3530	3657	3707	3634	3330	2911	2554	2305	2168	2133	2207	2418			
20	2660	3077	3294	3418	3559	3755	3939	3924	3518	2922	2447	2145	1976	1939	2009	2250			
25	2610	3113	3303	3370	3515	3815	4179	4348	3825	2965	2365	2000	1781	1738	1846	2106			
30	2570	3141	3287	3279	3429	3823	4470	4801	4252	3086	2308	1848	1554	1522	1686	1982			
35	2499	3154	3265	3187	3374	3901	4777	5209	4690	3382	2257	1639	1279	1268	1518	1886			
40	2462	3195	3208	3126	3337	3996	5258	5817	4946	3195	1947	1294	1024	1018	1335	1772			
45	2393	3226	3162	3054	3331	3923	5244	5471	4667	3148	1731	1075	874	852	1125	1666			
50	2360	3264	3150	3122	3234	3860	5003	5444	4686	3108	1470	945	785	750	938	1566			
55	2336	3352	3198	2881	2630	3607	5013	5489	4634	2992	1233	858	734	678	810	1448			
60	2358	3500	3291	2310	1720	3106	4985	5506	4514	2743	1060	790	669	613	723	1279			
65	2384	3759	3026	1037	458	1755	4477	5493	4298	2374	899	696	578	549	655	1035			
70	2514	4155	2638	216	154	249	4072	5252	3455	1783	712	478	353	430	581	826			
75	2539	4893	1091	97.5	92.3	116	2407	2617	1181	988	395	195	119	154	473	708			
80	1251	3116	154	48.7	46.3	60.5	516	291	152	292	98.0	77.6	80.4	69.2	105	545			
85	144	194	40.9	5.79	2.72	7.39	33.4	49.1	32.5	38.0	44.5	39.1	36.1	34.6	39.8	48.7			
90	2.79	4.59	1.43	0.00	0.00	0.00	1.38	2.39	2.89	4.00	0.37	0.00	0.00	0.00	1.06	2.23			
95	3.04	2.90	0.69	0.00	0.00	0.00	0.38	1.22	3.41	5.47	1.32	0.00	0.00	0.00	2.60	3.97			
100	5.19	2.79	0.58	0.00	0.00	0.00	0.26	1.16	3.94	5.89	3.22	0.00	0.00	0.48	5.03	7.15			
105	6.98	3.62	0.63	0.00	0.00	0.00	0.26	1.43	5.20	6.79	5.92	0.90	0.00	1.97	6.05	8.37			
110	8.87	4.83	1.16	0.11	0.00	0.00	0.42	2.12	5.41	7.94	4.22	2.12	0.91	3.35	6.78	9.85			
115	10.0	6.15	1.58	0.32	0.00	0.00	0.58	2.59	4.88	7.83	4.75	2.64	2.38	3.77	7.63	10.2			
120	11.0	6.47	2.32	0.69	0.26	0.42	0.79	2.70	4.57	7.04	5.27	4.02	3.66	5.36	8.10	10.2			
125	11.4	7.05	2.64	1.32	0.69	0.64	1.06	2.80	4.10	5.78	4.64	4.76	5.17	6.21	7.58	9.94			
130	11.2	6.99	2.79	1.53	1.11	0.85	1.17	2.86	4.14	4.94	4.59	5.18	5.86	6.95	7.57	8.62			
135	9.67	6.11	2.84	2.01	1.27	1.22	1.32	2.80	3.94	4.63	4.58	5.23	5.81	6.73	6.72	8.04			
140	9.08	5.78	2.90	2.22	1.37	1.48	1.32	2.80	3.94	4.63	3.69	5.07	5.70	6.52	6.04	8.10			
145	7.83	5.00	3.00	2.43	1.68	1.80	1.32	2.75	3.94	4.52	3.90	5.07	5.65	6.42	6.58	7.20			
150	6.99	4.58	3.89	2.75	2.43	2.17	2.22	2.91	3.94	4.42	4.11	5.07	5.65	6.42	7.15	6.03			
155	5.57	4.31	4.42	3.12	3.01	2.70	2.97	3.17	3.36	4.31	4.01	4.70	4.91	5.57	6.14	5.40			
160	4.67	4.31	4.64	3.59	3.06	3.02	3.23	3.44	3.73	3.89	3.74	4.60	4.70	4.93	5.14	4.82			
165	4.88	4.31	4.69	3.75	3.43	3.55	3.60	3.33	3.94	4.10	3.74	4.55	4.28	4.77	4.77	4.76			
170	4.93	4.57	5.59	4.81	4.43	4.61	4.71	3.76	4.67	4.73	4.91	6.03	6.07	6.32	6.30	6.46			
175	5.04	5.05	6.17	5.44	5.54	5.20	5.45	4.29	4.62	4.73	5.33	5.97	5.75	6.42	5.83	6.35			
180	4.20	5.26	5.69	5.55	5.70	5.36	5.46	4.45	4.10	4.36	4.90	5.66	5.33	5.73	5.35	5.45			

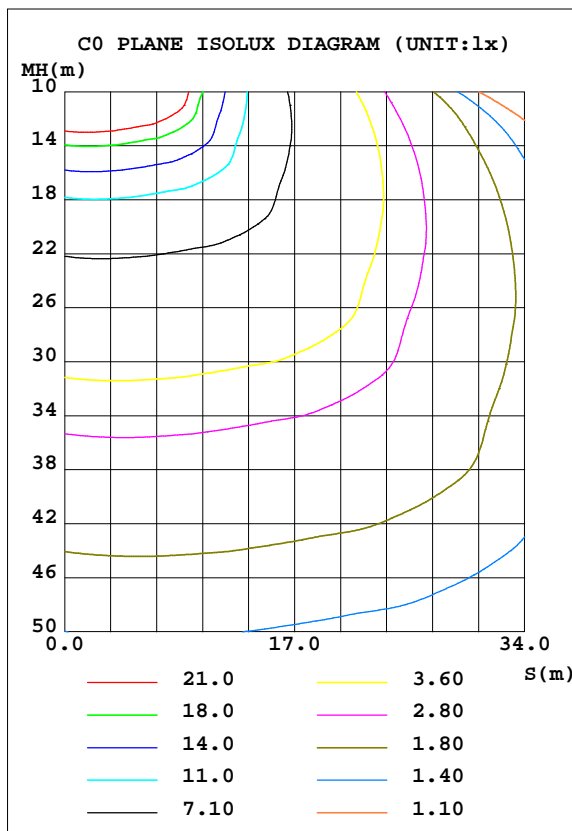
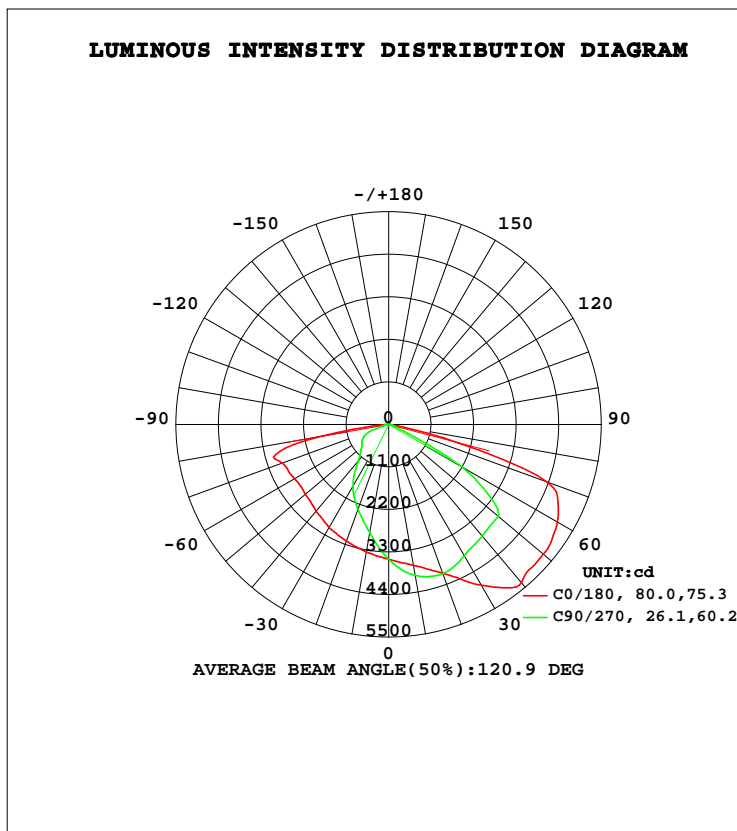
C Range: 0 - 360DEG
 C Interval: 22.5DEG
 Test Speed: HIGH
 Temperature: 25.2DEG
 Operators: Leo
 Test Date: 2016-03-07

γ Range: 0 - 180DEG
 γ Interval: 1.0DEG
 Test System: EVERFINE GO-R5000_V2 SYSTEM V2.0.284
 Humidity: 60.0%
 Test Distance: 26.000m [K=1.3570]
 Remarks:

LUMINAIRE PHOTOMETRIC TEST REPORT

Test:U:119.9V I:1.028A P:123.0W PF:0.9970 Lamp Flux:14189.9x1 lm		
NAME: SNC-NWP-120W-4000K	TYPE:	WEIGHT:
SPEC.:	DIM.:	SERIAL No.:
MFR.: SNC OPTO ELECTRONIC CO.,LTD	SUR.:	PROTECTION ANGLE:

DATA OF LAMP		PHOTOMETRIC DATA Eff: 115.41 lm/W			
MODEL	120W	I _{max} (cd)	6181	S/MH(C0/180)	1.33
NOMINAL POWER(W)	120	LOR(%)	100.0	S/MH(C90/270)	0.83
RATED VOLTAGE(V)	120	TOTAL FLUX(lm)	14190	η UP, DN(C0-180)	0.1,67.9
NOMINAL FLUX(lm)	14189.9	CIE CLASS	DIRECT	η UP, DN(C180-360)	0.1,31.9
LAMPS INSIDE	1	η up(%)	0.2	CIBSE SHR NOM	1.50
TEST VOLTAGE(V)	120.0	η down(%)	99.8	CIBSE SHR MAX	1.55



C Range: 0 - 360DEG
 C Interval: 22.5DEG
 Test Speed: HIGH
 Temperature:25.2DEG
 Operators:Leo
 Test Date:2016-03-07

γ Range: 0 - 180DEG
 γ Interval: 1.0DEG
 Test System:EVERFINE GO-R5000_V2 SYSTEM V2.0.284
 Humidity:60.0%
 Test Distance:26.000m [K=1.3570]
 Remarks:

ZONAL FLUX DIAGRAM

ZONAL FLUX DIAGRAM:

γ	C0	C45	C90	C135	C180	C225	C270	C315	γ	Φ zone	Φ total	%lum,lamp
10	3701	4025	3962	3737	3344	2935	2846	3150	0- 10	331.9	331.9	2.34,2.34
20	4094	4533	4102	3837	3212	2426	2333	2848	10- 20	975.4	1307	9.21,9.21
30	4798	5092	3916	3792	3081	2034	1851	2638	20- 30	1579	2886	20.3,20.3
40	5342	5626	3769	3645	2924	1635	1231	2287	30- 40	2110	4996	35.2,35.2
50	5215	5642	3699	3508	2811	1181	916.0	1731	40- 50	2472	7468	52.6,52.6
60	5037	5635	2133	3622	2809	872.9	784.6	1204	50- 60	2667	10134	71.4,71.4
70	4365	4715	183.5	2797	2931	685.4	479.9	873.1	60- 70	2401	12535	88.3,88.3
80	261.0	1026	54.32	179.3	1744	167.8	92.60	112.1	70- 80	1450	13985	98.6,98.6
90	4.419	2.484	0	1.114	3.261	1.637	0	1.061	80- 90	177.3	14162	99.8,99.8
100	5.048	0.6329	0	0.5298	5.418	6.008	0	3.604	90-100	2.292	14165	99.8,99.8
110	7.468	0.5796	0	1.325	9.154	8.223	1.325	4.822	100-110	3.658	14168	99.8,99.8
120	7.469	1.318	0.4753	2.858	9.940	10.67	4.450	5.457	110-120	4.771	14173	99.9,99.9
130	6.836	1.528	1.320	3.390	9.885	8.169	6.601	5.511	120-130	4.935	14178	99.9,99.9
140	5.838	1.688	2.002	3.501	8.520	6.483	6.495	4.771	130-140	4.095	14182	99.9,99.9
150	5.417	3.052	3.165	4.182	7.363	6.744	6.864	6.306	140-150	3.260	14185	100,100
160	4.103	4.321	3.749	5.245	5.574	5.533	5.649	5.510	150-160	2.393	14188	100,100
170	5.101	6.052	5.322	6.360	6.311	6.535	7.393	7.100	160-170	1.473	14189	100,100
180	5.166	6.902	6.759	6.729	4.996	5.692	6.126	6.360	170-180	0.6129	14190	100,100
DEG	LUMINOUS INTENSITY:cd									UNIT:lm		

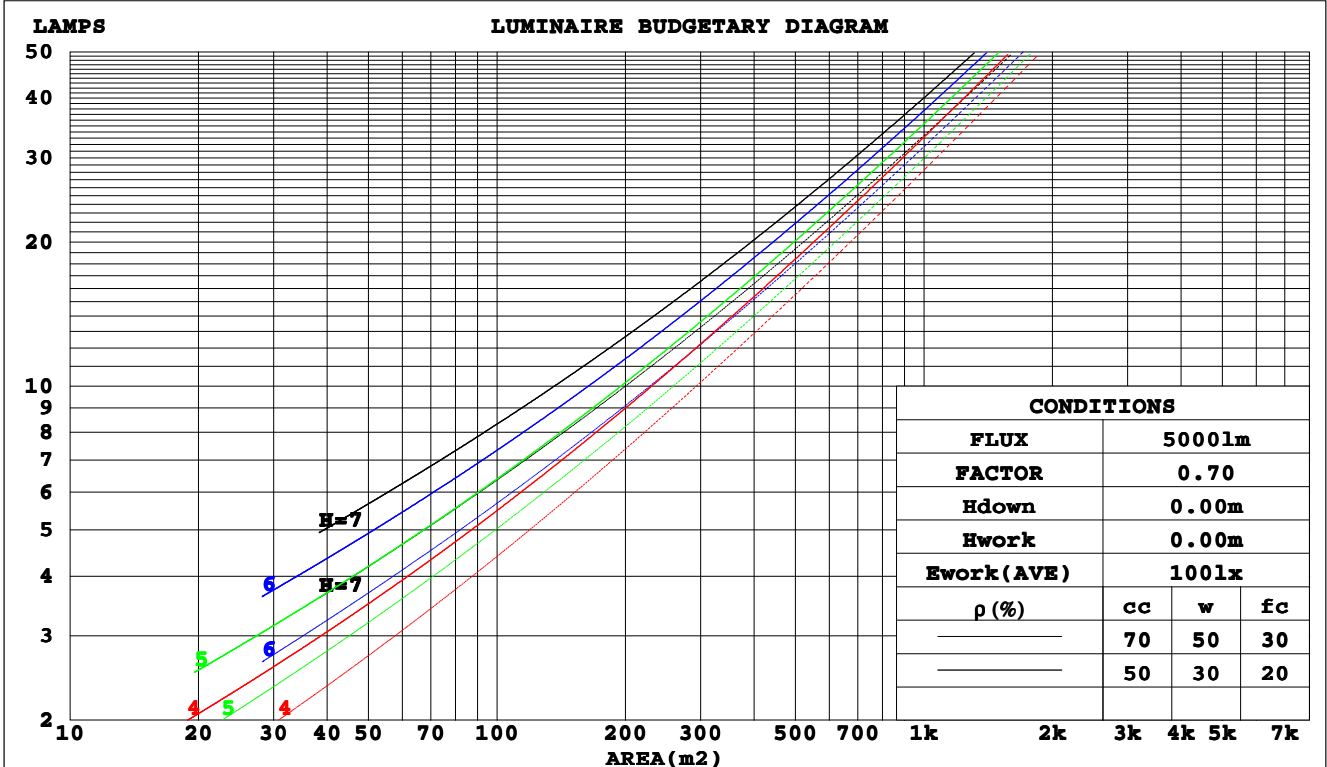
C Range: 0 - 360DEG
 C Interval: 22.5DEG
 Test Speed: HIGH
 Temperature:25.2DEG
 Operators:Leo
 Test Date:2016-03-07

γ Range: 0 - 180DEG
 γ Interval: 1.0DEG
 Test System:EVERFINE GO-R5000_V2 SYSTEM V2.0.284
 Humidity:60.0%
 Test Distance:26.000m [K=1.3570]
 Remarks:

CU AND LUMINAIRE BUDGETARY ESTIMATE DIAGRAM

Test:U:119.9V I:1.028A P:123.0W PF:0.9970 Lamp Flux:14189.9x1 lm		
NAME: SNC-NWP-120W-4000K	TYPE:	WEIGHT:
SPEC.:	DIM.:	SERIAL No.:
MFR.: SNC OPTO ELECTRONIC CO.,LTD	SUR.:	PROTECTION ANGLE:

ρ_{cc}	80%			70%			50%			30%			10%			0
ρ_w	50%	30%	10%	50%	30%	10%	50%	30%	10%	50%	30%	10%	50%	30%	10%	0
ρ_{fc}	20%			20%			20%			20%			20%			0
RCR	RCR:Room Cavity Ratio						Coefficients of Utilization(CU)									
0.0	1.19	1.19	1.19	1.16	1.16	1.16	1.11	1.11	1.11	1.06	1.06	1.06	1.02	1.02	1.02	.00
1.0	1.02	.98	.94	1.00	.96	.92	.96	.92	.89	.92	.89	.86	.88	.86	.84	.81
2.0	.87	.80	.74	.86	.79	.73	.82	.76	.71	.78	.74	.69	.75	.71	.68	.65
3.0	.75	.67	.59	.74	.66	.59	.71	.64	.58	.68	.62	.57	.65	.60	.56	.53
4.0	.66	.56	.49	.64	.56	.49	.62	.54	.48	.59	.53	.47	.57	.51	.46	.44
5.0	.58	.48	.41	.57	.48	.41	.55	.47	.40	.53	.46	.40	.51	.44	.39	.37
6.0	.52	.42	.35	.51	.42	.35	.49	.41	.35	.47	.40	.34	.45	.39	.34	.32
7.0	.47	.37	.31	.46	.37	.30	.44	.36	.30	.43	.35	.30	.41	.35	.30	.28
8.0	.42	.33	.27	.41	.33	.27	.40	.32	.27	.39	.32	.26	.38	.31	.26	.24
9.0	.39	.30	.24	.38	.30	.24	.37	.29	.24	.36	.29	.24	.34	.28	.23	.21
10.0	.35	.27	.21	.35	.27	.21	.34	.26	.21	.33	.26	.21	.32	.26	.21	.19



C Range: 0 - 360DEG
 C Interval: 22.5DEG
 Test Speed: HIGH
 Temperature: 25.2DEG
 Operators: Leo
 Test Date: 2016-03-07

γ Range: 0 - 180DEG
 γ Interval: 1.0DEG
 Test System: EVERFINE GO-R5000_V2 SYSTEM V2.0.284
 Humidity: 60.0%
 Test Distance: 26.000m [K=1.3570]
 Remarks:

WEC AND CCEC

Test:U:119.9V I:1.028A P:123.0W PF:0.9970 Lamp Flux:14189.9x1 lm		
NAME: SNC-NWP-120W-4000K	TYPE:	WEIGHT:
SPEC.:	DIM.:	SERIAL No.:
MFR.: SNC OPTO ELECTRONIC CO.,LTD	SUR.:	PROTECTION ANGLE:

ρ_{cc}	80%			70%			50%			30%			10%			0
ρ_w	50%	30%	10%	50%	30%	10%	50%	30%	10%	50%	30%	10%	50%	30%	10%	0
ρ_{fc}	20%			20%			20%			20%			20%			0
RCR	RCR:Room Cavity Ratio						Wall Exitance Coefficients(WEC)									
0.0																
1.0	.337	.192	.061	.330	.188	.060	.316	.181	.058	.304	.175	.056	.292	.169	.055	
2.0	.320	.175	.054	.313	.172	.053	.301	.167	.052	.290	.163	.051	.280	.158	.050	
3.0	.295	.157	.047	.289	.155	.047	.278	.151	.046	.268	.147	.045	.259	.143	.044	
4.0	.270	.140	.041	.265	.139	.041	.255	.135	.040	.247	.132	.040	.238	.129	.039	
5.0	.248	.126	.037	.243	.125	.036	.235	.122	.036	.227	.120	.036	.220	.117	.035	
6.0	.228	.115	.033	.224	.113	.033	.217	.111	.032	.210	.109	.032	.203	.107	.032	
7.0	.211	.105	.030	.208	.104	.030	.201	.102	.029	.195	.100	.029	.189	.098	.029	
8.0	.196	.096	.027	.193	.095	.027	.187	.094	.027	.182	.092	.027	.176	.090	.026	
9.0	.183	.089	.025	.180	.088	.025	.175	.087	.025	.170	.085	.024	.165	.084	.024	
10.0	.172	.082	.023	.169	.082	.023	.164	.080	.023	.160	.079	.023	.155	.078	.022	

ρ_{cc}	80%			70%			50%			30%			10%			0
ρ_w	50%	30%	10%	50%	30%	10%	50%	30%	10%	50%	30%	10%	50%	30%	10%	0
ρ_{fc}	20%			20%			20%			20%			20%			0
RCR	RCR:Room Cavity Ratio						Ceiling Cavity Exitance Coefficients(CCEC)									
0.0	.192	.192	.192	.164	.164	.164	.112	.112	.112	.064	.064	.064	.021	.021	.021	
1.0	.184	.157	.134	.157	.135	.115	.107	.093	.080	.062	.054	.046	.020	.017	.015	
2.0	.177	.133	.096	.152	.115	.083	.104	.079	.058	.060	.046	.034	.019	.015	.011	
3.0	.171	.116	.072	.146	.100	.063	.100	.070	.044	.058	.041	.026	.019	.013	.008	
4.0	.164	.103	.057	.140	.089	.049	.096	.062	.035	.056	.036	.021	.018	.012	.007	
5.0	.156	.093	.046	.134	.080	.040	.092	.056	.028	.054	.033	.017	.017	.011	.006	
6.0	.149	.085	.039	.128	.073	.034	.088	.051	.024	.051	.030	.014	.017	.010	.005	
7.0	.142	.078	.033	.122	.067	.029	.084	.047	.020	.049	.028	.012	.016	.009	.004	
8.0	.135	.072	.029	.116	.062	.025	.080	.044	.018	.047	.026	.011	.015	.008	.004	
9.0	.129	.067	.026	.111	.058	.022	.077	.041	.016	.045	.024	.009	.014	.008	.003	
10.0	.122	.063	.023	.106	.055	.020	.073	.038	.014	.043	.023	.009	.014	.007	.003	

C Range: 0 - 360DEG
 C Interval: 22.5DEG
 Test Speed: HIGH
 Temperature:25.2DEG
 Operators:Leo
 Test Date:2016-03-07

γ Range: 0 - 180DEG
 γ Interval: 1.0DEG
 Test System:EVERFINE GO-R5000_V2 SYSTEM V2.0.284
 Humidity:60.0%
 Test Distance:26.000m [K=1.3570]
 Remarks:

UGR(Unified Glare Rating) Table

Test:U:119.9V I:1.028A P:123.0W PF:0.9970 Lamp Flux:14189.9x1 lm		
NAME: SNC-NWP-120W-4000K	TYPE:	WEIGHT:
SPEC.:	DIM.:	SERIAL No.:
MFR.: SNC OPTO ELECTRONIC CO.,LTD	SUR.:	PROTECTION ANGLE:

ceiling/cavity	0.7	0.7	0.5	0.5	0.3	0.7	0.7	0.5	0.5	0.3
walls	0.5	0.3	0.5	0.3	0.3	0.5	0.3	0.5	0.3	0.3
working plane	0.2	0.2	0.2	0.2	0.2	0.2	0.2	0.2	0.2	0.2
Room dimensions	Viewed crosswise					Viewed endwise				
x = 2H y = 2H	32.0	33.7	32.3	33.9	34.1	29.0	30.6	29.3	30.8	31.1
3H	34.9	36.5	35.2	36.7	37.0	29.1	30.6	29.4	30.8	31.1
4H	35.6	37.1	35.9	37.3	37.6	29.0	30.4	29.3	30.7	30.9
6H	35.6	37.0	35.9	37.2	37.5	28.8	30.2	29.2	30.5	30.8
8H	35.5	36.9	35.9	37.2	37.5	28.8	30.1	29.1	30.4	30.7
12H	35.5	36.8	35.8	37.1	37.4	28.7	30.0	29.1	30.3	30.6
4H 2H	32.9	34.4	33.3	34.6	34.9	30.9	32.4	31.3	32.6	32.9
3H	36.2	37.5	36.5	37.8	38.1	31.4	32.7	31.8	33.0	33.3
4H	37.0	38.2	37.4	38.5	38.8	31.3	32.5	31.7	32.8	33.2
6H	37.0	38.0	37.4	38.4	38.8	31.3	32.3	31.7	32.7	33.0
8H	37.0	37.9	37.4	38.3	38.7	31.2	32.2	31.6	32.6	32.9
12H	36.9	37.8	37.3	38.2	38.6	31.2	32.1	31.6	32.5	32.9
8H 4H	37.2	38.1	37.6	38.5	38.9	32.9	33.8	33.3	34.2	34.6
6H	37.2	38.0	37.7	38.4	38.9	32.8	33.6	33.3	34.0	34.5
8H	37.2	37.9	37.7	38.3	38.8	32.8	33.5	33.3	33.9	34.4
12H	37.2	37.8	37.6	38.2	38.7	32.8	33.4	33.2	33.8	34.3
12H 4H	37.1	38.0	37.6	38.4	38.8	32.8	33.7	33.3	34.1	34.5
6H	37.2	37.9	37.7	38.3	38.8	32.8	33.5	33.3	34.0	34.4
8H	37.2	37.8	37.7	38.2	38.7	32.8	33.4	33.3	33.9	34.4
Variations with the observer position at spacings:										
s = 1.0H	+ 0.1 / - 0.2					+ 0.2 / - 0.2				
1.5H	+ 0.4 / - 0.9					+ 0.6 / - 1.1				
2.0H	+ 1.1 / - 1.6					+ 0.9 / - 1.4				

CIE Pub.117 Corrected 14190 lm Total Lamp Luminous Flux.(8log(F/F0) = 9.2)

C Range: 0 - 360DEG
 C Interval: 22.5DEG
 Test Speed: HIGH
 Temperature:25.2DEG
 Operators:Leo
 Test Date:2016-03-07

γ Range: 0 - 180DEG
 γ Interval: 1.0DEG
 Test System:EVERFINE GO-R5000_V2 SYSTEM V2.0.284
 Humidity:60.0%
 Test Distance:26.000m [K=1.3570]
 Remarks:

UTILIZATION FACTORS TABLE

Test:U:119.9V I:1.028A P:123.0W PF:0.9970 Lamp Flux:14189.9x1 lm		
NAME: SNC-NWP-120W-4000K	TYPE:	WEIGHT:
SPEC.:	DIM.:	SERIAL No.:
MFR.: SNC OPTO ELECTRONIC CO.,LTD	SUR.:	PROTECTION ANGLE:

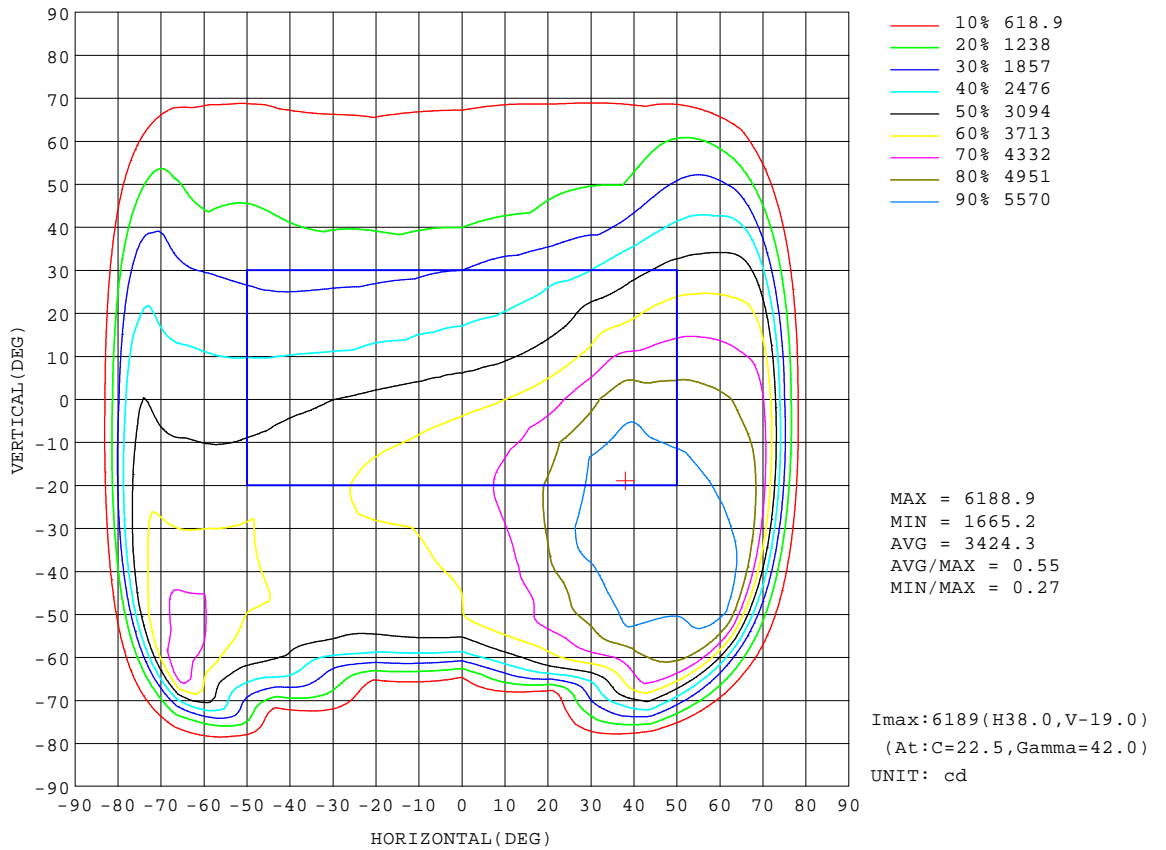
REFLECTANCE										
Ceiling	0.8	0.8	0.8	0.7	0.7	0.7	0.5	0.5	0.5	0
Walls	0.7	0.5	0.3	0.7	0.5	0.3	0.7	0.5	0.3	0
Working plane	0.2	0.2	0.2	0.2	0.2	0.2	0.2	0.2	0.2	0
ROOM INDEX	UTILIZATION FACTORS(PERCENT) $k(RI) \times RCR = 5$									
k = 0.60	52	40	32	51	39	32	50	39	32	25
0.80	62	50	41	61	49	41	59	48	41	33
1.00	71	59	51	70	58	50	67	60	50	42
1.25	78	67	59	77	66	58	74	64	58	49
1.50	84	73	65	82	72	64	79	70	63	55
2.00	92	82	75	90	81	74	86	78	73	64
2.50	96	88	81	94	86	80	90	83	78	69
3.00	100	92	86	98	91	85	94	88	83	74
4.00	105	98	93	102	97	92	98	93	89	80
5.00	108	102	98	105	100	96	100	97	93	84
ROOM INDEX	UF(total)									Direct
According to DIN EN 13032-2 2004			Suspended				SHRNOM = 1.25			

C Range: 0 - 360DEG
 C Interval: 22.5DEG
 Test Speed: HIGH
 Temperature:25.2DEG
 Operators:Leo
 Test Date:2016-03-07

γ Range: 0 - 180DEG
 γ Interval: 1.0DEG
 Test System:EVERFINE GO-R5000_V2 SYSTEM V2.0.284
 Humidity:60.0%
 Test Distance:26.000m [K=1.3570]
 Remarks:

ISOCANDELA DIAGRAM

Test:U:119.9V I:1.028A P:123.0W PF:0.9970 Lamp Flux:14189.9x1 lm		
NAME: SNC-NWP-120W-4000K	TYPE:	WEIGHT:
SPEC.:	DIM.:	SERIAL No.:
MFR.: SNC OPTO ELECTRONIC CO.,LTD	SUR.:	PROTECTION ANGLE:



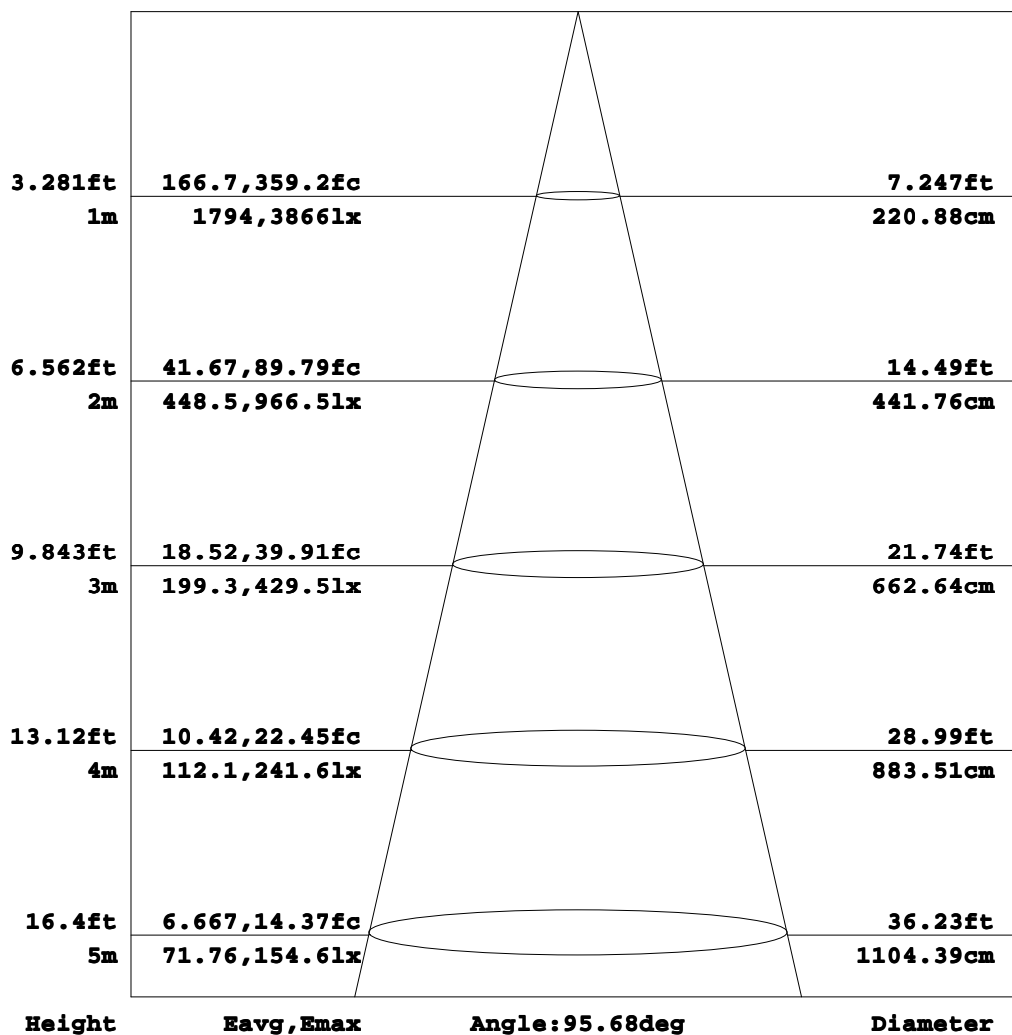
C Range: 0 - 360DEG
C Interval: 22.5DEG
Test Speed: HIGH
Temperature:25.2DEG
Operators:Leo
Test Date:2016-03-07

γ Range: 0 - 180DEG
γ Interval: 1.0DEG
Test System:EVERFINE GO-R5000_V2 SYSTEM V2.0.284
Humidity:60.0%
Test Distance:26.000m [K=1.3570]
Remarks:

AAI Figure

Test:U:119.9V I:1.028A P:123.0W PF:0.9970 Lamp Flux:14189.9x1 lm		
NAME: SNC-NWP-120W-4000K	TYPE:	WEIGHT:
SPEC.:	DIM.:	SERIAL No.:
MFR.: SNC OPTO ELECTRONIC CO.,LTD	SUR.:	PROTECTION ANGLE:

Flux out:6952 lm



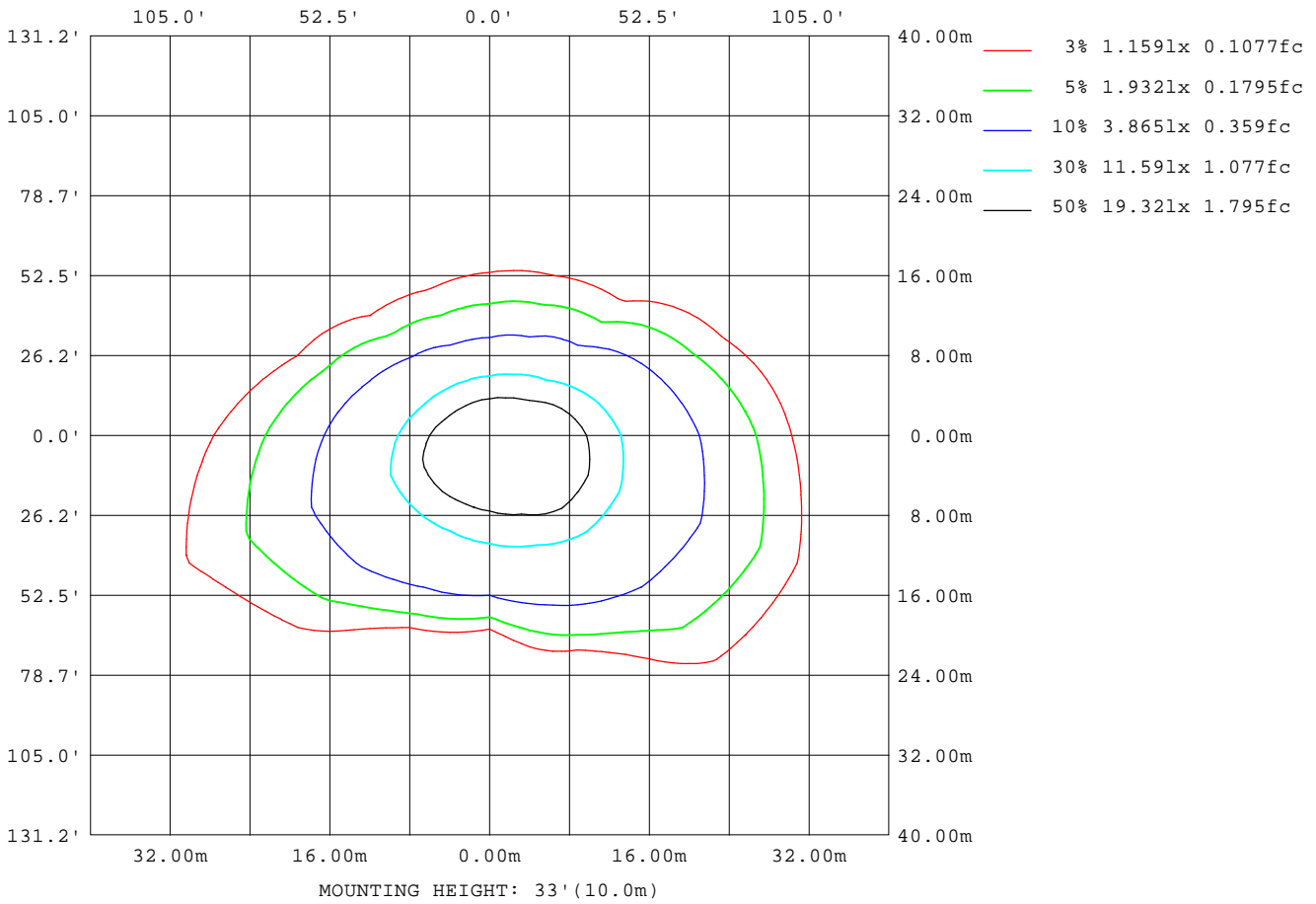
Note: The Curves indicate the illuminated area and the average illumination when the luminaire is at different distance.

C Range: 0 - 360DEG
 C Interval: 22.5DEG
 Test Speed: HIGH
 Temperature: 25.2DEG
 Operators: Leo
 Test Date: 2016-03-07

γ Range: 0 - 180DEG
 γ Interval: 1.0DEG
 Test System: EVERFINE GO-R5000_V2 SYSTEM V2.0.284
 Humidity: 60.0%
 Test Distance: 26.000m [K=1.3570]
 Remarks:

ISOLUX DIAGRAM

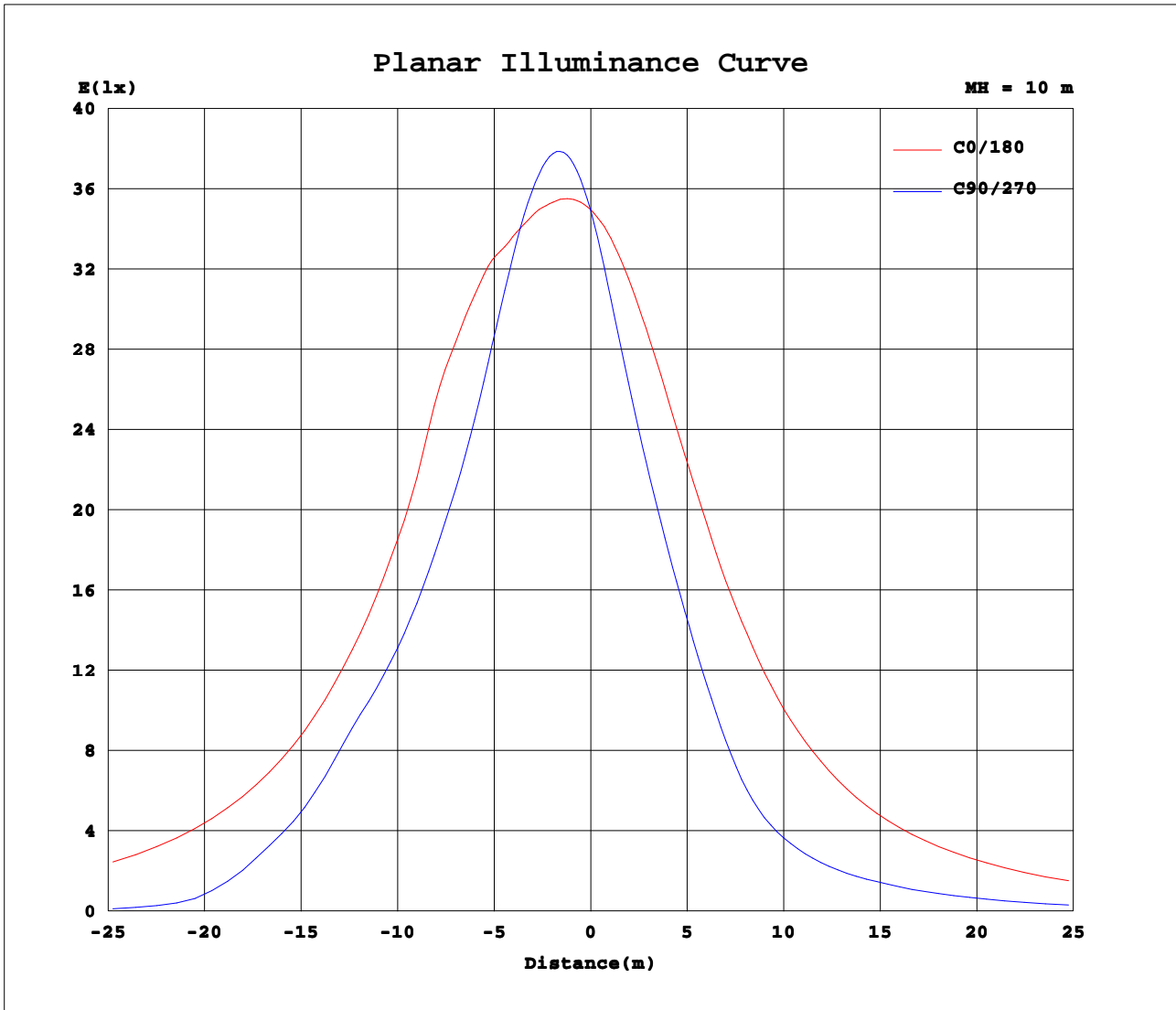
Test:U:119.9V I:1.028A P:123.0W PF:0.9970 Lamp Flux:14189.9x1 lm		
NAME: SNC-NWP-120W-4000K	TYPE:	WEIGHT:
SPEC.:	DIM.:	SERIAL No.:
MFR.: SNC OPTO ELECTRONIC CO.,LTD	SUR.:	PROTECTION ANGLE:



C Range: 0 - 360DEG
C Interval: 22.5DEG
Test Speed: HIGH
Temperature: 25.2DEG
Operators: Leo
Test Date: 2016-03-07

γ Range: 0 - 180DEG
γ Interval: 1.0DEG
Test System: EVERFINE GO-R5000_V2 SYSTEM V2.0.284
Humidity: 60.0%
Test Distance: 26.000m [K=1.3570]
Remarks:

Planar Illuminance Curve



C Range: 0 - 360DEG
 C Interval: 22.5DEG
 Test Speed: HIGH
 Temperature: 25.2DEG
 Operators: Leo
 Test Date: 2016-03-07

γ Range: 0 - 180DEG
 γ Interval: 1.0DEG
 Test System: EVERFINE GO-R5000_V2 SYSTEM V2.0.284
 Humidity: 60.0%
 Test Distance: 26.000m [K=1.3570]
 Remarks:

LUMINOUS DISTRIBUTION INTENSITY DATA

Test:U:119.9V I:1.028A P:123.0W PF:0.9970 Lamp Flux:14189.9x1 lm		
NAME: SNC-NWP-120W-4000K	TYPE:	WEIGHT:
SPEC.:	DIM.:	SERIAL No.:
MFR.: SNC OPTO ELECTRONIC CO.,LTD	SUR.:	PROTECTION ANGLE:

Table--1

UNIT: cd

C (DEG) \ γ (DEG)	0	23	45	68	90	113	135	158	180	203	225	248	270	293	315	338			
0	3490	3490	3490	3490	3490	3490	3490	3490	3490	3490	3490	3490	3490	3490	3490	3490			
5	3581	3694	3766	3792	3762	3720	3634	3525	3417	3307	3211	3171	3164	3220	3323	3448			
10	3701	3923	4025	4034	3962	3878	3737	3557	3344	3111	2935	2856	2846	2950	3150	3416			
15	3873	4195	4270	4213	4074	3962	3795	3587	3275	2928	2668	2565	2570	2712	2990	3395			
20	4094	4543	4533	4330	4102	3958	3837	3613	3212	2745	2426	2324	2333	2509	2848	3414			
25	4413	4968	4802	4379	4038	3892	3835	3638	3140	2564	2228	2095	2107	2317	2738	3454			
30	4798	5394	5092	4381	3916	3768	3792	3657	3081	2400	2034	1848	1851	2126	2638	3536			
35	5152	5755	5370	4378	3826	3657	3728	3653	2988	2253	1843	1568	1545	1899	2550	3722			
40	5342	6115	5626	4386	3769	3579	3645	3667	2924	2116	1635	1260	1231	1537	2287	3665			
45	5234	6024	5731	4379	3713	3483	3574	3657	2845	1989	1413	1030	1034	1261	2044	3606			
50	5215	6024	5642	4338	3699	3470	3508	3671	2811	1879	1181	894	916	1102	1731	3543			
55	5162	6030	5636	4293	3140	3341	3506	3743	2784	1761	991	799	850	994	1417	3385			
60	5037	6026	5635	3742	2133	2609	3622	3870	2809	1616	873	723	785	921	1204	3100			
65	4830	6021	5152	2690	557	1199	3297	4086	2862	1396	784	655	689	835	1039	2710			
70	4365	5931	4715	395	183	262	2797	4409	2931	1139	685	547	480	625	873	2173			
75	1871	3514	3402	142	107	114	1208	4838	3038	916	580	286	141	262	546	1313			
80	261	366	1026	72.9	54.3	57.8	179	4534	1744	689	168	85.2	92.6	87.6	112	434			
85	40.9	49.7	48.2	8.94	4.80	8.83	49.2	414	209	96.6	50.5	42.8	43.4	45.4	51.4	47.9			
90	4.42	2.95	2.48	0.00	0.00	0.00	1.11	5.82	3.26	2.79	1.64	0.00	0.00	0.00	1.06	5.87			
95	4.47	1.74	1.06	0.00	0.00	0.00	0.58	3.91	3.74	4.74	3.59	0.00	0.00	0.00	1.96	6.50			
100	5.05	1.58	0.63	0.00	0.00	0.00	0.53	3.60	5.42	7.32	6.01	0.80	0.00	0.00	3.60	6.88			
105	6.47	2.37	0.53	0.00	0.00	0.00	1.01	4.49	7.42	9.38	7.23	2.60	0.00	0.75	4.72	8.20			
110	7.47	3.05	0.58	0.00	0.00	0.53	1.32	5.76	9.15	10.5	8.22	4.34	1.32	2.39	4.82	9.31			
115	7.68	3.37	0.90	0.16	0.16	0.53	2.12	6.92	9.78	12.2	9.22	4.76	3.01	2.87	5.14	8.41			
120	7.47	3.37	1.32	0.42	0.48	1.06	2.86	7.35	9.94	12.2	10.7	6.52	4.45	4.20	5.46	7.03			
125	6.90	3.63	1.53	0.85	1.27	1.54	3.02	7.98	9.94	11.6	8.90	7.52	6.02	5.21	5.35	6.29			
130	6.84	3.79	1.53	1.32	1.32	1.91	3.39	7.99	9.89	10.4	8.17	7.94	6.60	6.21	5.51	5.50			
135	5.95	3.63	1.53	1.58	1.58	2.28	3.71	6.83	9.36	9.11	8.01	7.67	6.60	6.16	4.77	5.45			
140	5.84	3.69	1.69	1.91	2.00	2.91	3.50	6.82	8.52	9.06	6.48	7.36	6.50	6.32	4.77	5.50			
145	5.68	3.27	2.06	2.27	2.22	3.13	3.34	5.98	8.10	8.36	6.59	7.36	6.61	6.37	5.41	5.13			
150	5.42	3.26	3.05	2.64	3.17	3.66	4.18	5.92	7.36	7.89	6.74	7.30	6.86	6.48	6.31	4.97			
155	4.84	3.42	3.85	3.23	3.69	3.98	5.14	5.92	5.47	7.05	6.27	6.45	6.27	6.25	5.82	4.97			
160	4.10	3.69	4.32	3.70	3.75	4.25	5.25	5.50	5.57	6.05	5.53	5.77	5.65	5.63	5.51	5.02			
165	4.63	4.05	4.80	4.02	4.12	4.67	5.25	5.08	5.52	5.69	4.96	5.78	5.34	5.63	5.41	5.24			
170	5.10	4.84	6.05	5.49	5.32	5.89	6.36	5.39	6.31	6.37	6.53	7.83	7.39	7.44	7.10	7.14			
175	5.52	5.58	6.64	6.13	6.49	6.37	6.73	5.55	6.20	6.05	6.53	7.30	6.97	7.59	6.83	7.14			
180	5.17	5.90	6.90	6.45	6.76	6.42	6.73	5.50	5.00	5.21	5.69	6.72	6.13	6.79	6.36	6.72			

C Range: 0 - 360DEG
 C Interval: 22.5DEG
 Test Speed: HIGH
 Temperature: 25.2DEG
 Operators: Leo
 Test Date: 2016-03-07

γ Range: 0 - 180DEG
 γ Interval: 1.0DEG
 Test System: EVERFINE GO-R5000_V2 SYSTEM V2.0.284
 Humidity: 60.0%
 Test Distance: 26.000m [K=1.3570]
 Remarks: